



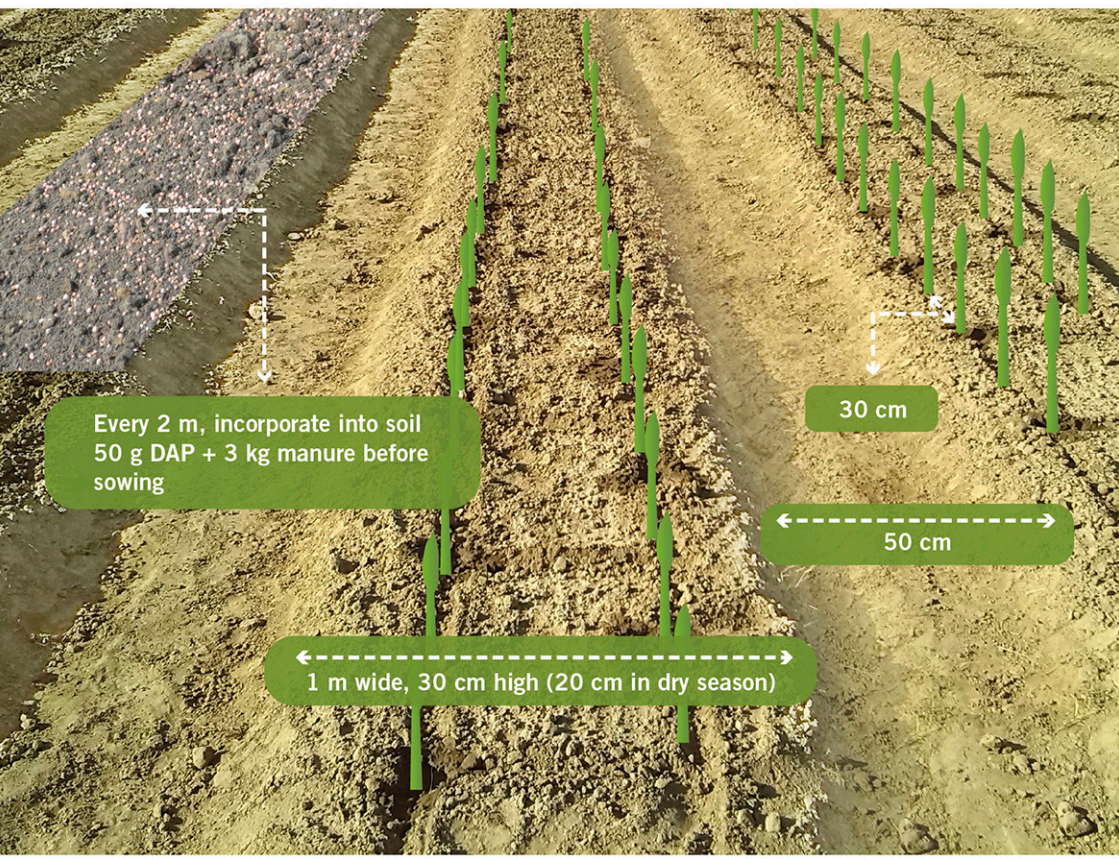
# Crop Guide SWEET CORN



ENGLISH (EAST AFRICA)

## • Land Preparation

- » Narrow paths help with irrigation and drainage
- » 21,500 plants per acre



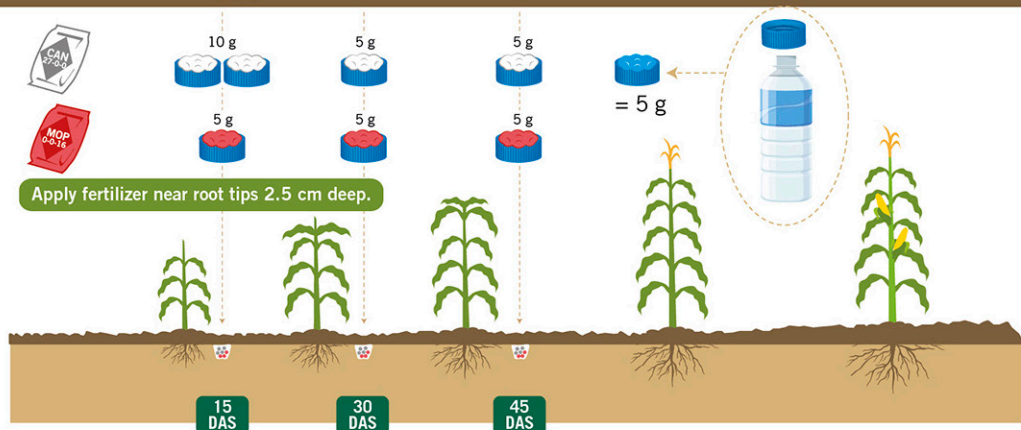
# • Sowing



- » Plant 1-2 seeds per space. (thin to one plant when 4" tall) for better quality cobs.
- » If one seed per space, prepare a tray of seedlings to top of empty spaces



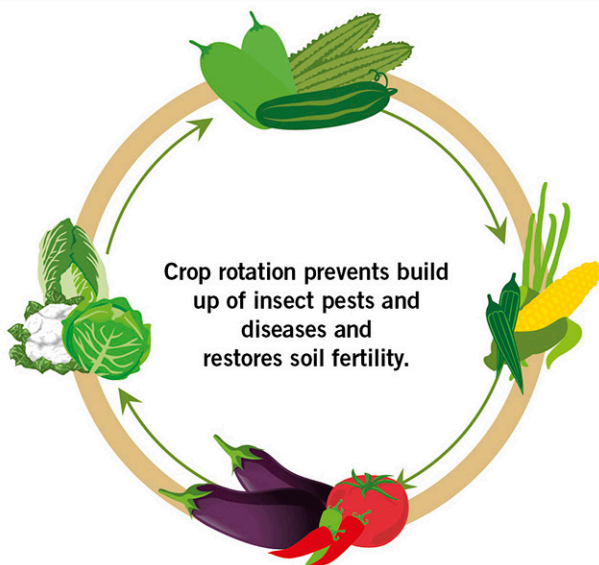
# • Fertilizer Application



The recommended fertilizer amount is based on plant population of 21,500 per acre

# • How to assure high yield

To prevent infection from spreading, sick plants, old crops and weeds must be removed.



# • Safe and effective use of pesticides



1 Wear protective gear



2 Good weather



3 Good nozzle



4 Wash after spraying

## Kinds of Insects



1 Aphid



2 Caterpillar



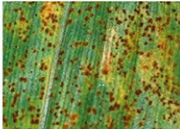
Active Ingredient	MoA	Target	1	2
Fipronil	2B	SC	👉	
Lambda-cyhalothrin	3A	SC	👉	👉
Dinotefuran	4A	S	👉	
Thiamethoxam	4A	S	👉	
Imidacloprid	4A	S	👉	
Spinosad	5	S		👉
Abamectin	6	SC (Slight S)		👉
Thiocyclam oxalate	14	SC	👉	
Chlorantraniliprole	28	S		👉
Flubendiamide	28	S		👉

MoA (Mode of Action); SC (Stomach + Contact); S (Systemic)

- » Alternate mode of action (MoA) groups to prevent resistance
- » Remove infected plants

Active Ingredient	MoA	Target	Remark
Chlorothalonil	Preventive	Broad spectrum	
Mancozeb	Preventive	Broad spectrum	
Azoxystrobin	Preventive + Curative	Rust	Maximum 4 times per crop cycle
Propamocarb	Preventive + Curative	Downy mildew	

## Kinds of Diseases



Rust



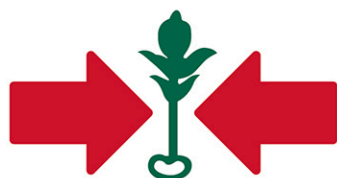
Corn leaf blight



Downy mildew



MLN Virus



EAST-WEST SEED

<http://guides.eastwestseed.com>

*This crop guide is part of a series produced by EWSF. ©2017 Copyright of East-West Seed Foundation. All Rights Reserved  
Agrochemical recommendations have been developed in cooperation with Wageningen University & Research*

