



## Crop Guide

# WAXY CORN

### • Land Preparation

- » Narrow paths help with irrigation and drainage
- » 45,400 plants/ha



ENGLISH



Every 2 m, incorporate into soil 50 g 15:15:15 + 3 kg manure before sowing

30 cm

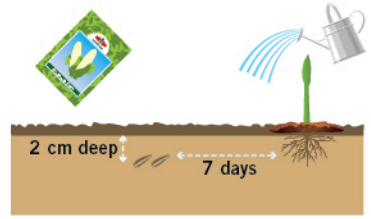
50 cm

1 m wide, 30 cm high (20 cm in dry season)

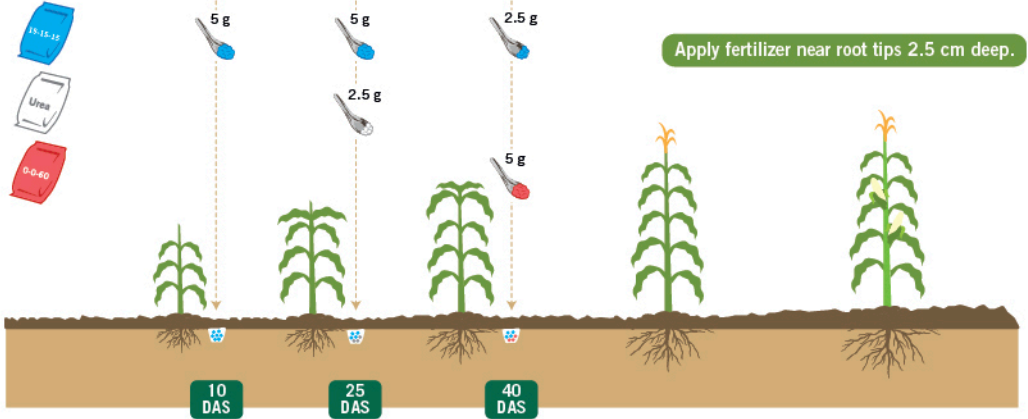
## • Sowing



- » Plant 1-2 seeds per space.  
(thin to one plant when 4" tall)  
for better quality cobs.
- » If one seed per space,  
prepare a tray of seedlings to top  
of empty spaces



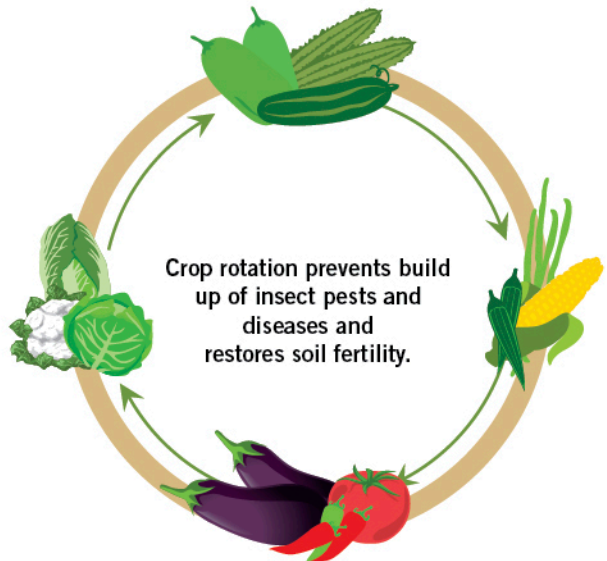
## • Fertilizer Application



The recommended fertilizer amount is based on plant population of 45,400 per hectare.

## • How to assure high yield

To prevent infection from spreading,  
sick plants, old crops and  
weeds must be removed.



# • Safe and effective use of pesticides



1 Wear protective gear



2 Good weather



3 Good nozzle



4 Wash after spraying

## Kinds of Insects



1 Aphid



2 Caterpillar



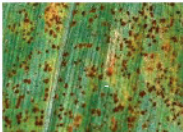
Active Ingredient	MoA	Target	1	2
Fipronil	2B	SC	🐛	
Lambda-cyhalothrin	3A	SC	🐛	🐛
Dinotefuran	4A	S	🐛	
Thiamethoxam	4A	S	🐛	
Imidacloprid	4A	S	🐛	
Spinosad	5	S		🐛
Abamectin	6	SC (Slight S)		🐛
Thiocyclam oxalate	14	SC	🐛	
Chlorantraniliprole	28	S		🐛
Flubendiamide	28	S		🐛

MoA (Mode of Action); SC (Stomach + Contact); S (Systemic)

- » Alternate mode of action (MoA) groups to prevent resistance
- » Remove infected plants

Active Ingredient	MoA	Target	Remark
Chlorothalonil	Preventive	Broad spectrum	
Mancozeb	Preventive	Broad spectrum	
Azoxystrobin	Preventive + Curative	Rust	
		Corn leaf blight	Maximum 4 times per crop cycle
Propamocarb	Preventive + Curative	Downy mildew	

## Kinds of Diseases



Rust

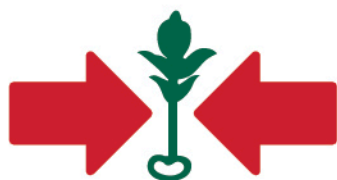


Corn leaf blight



Downy mildew





EAST-WEST SEED

<http://guides.eastwestseed.com>

*This crop guide is part of a series produced by EWSF. ©2017 Copyright of East-West Seed Foundation. All Rights Reserved  
Agrochemical recommendations have been developed in cooperation with Wageningen University & Research*

