



Crop Guide

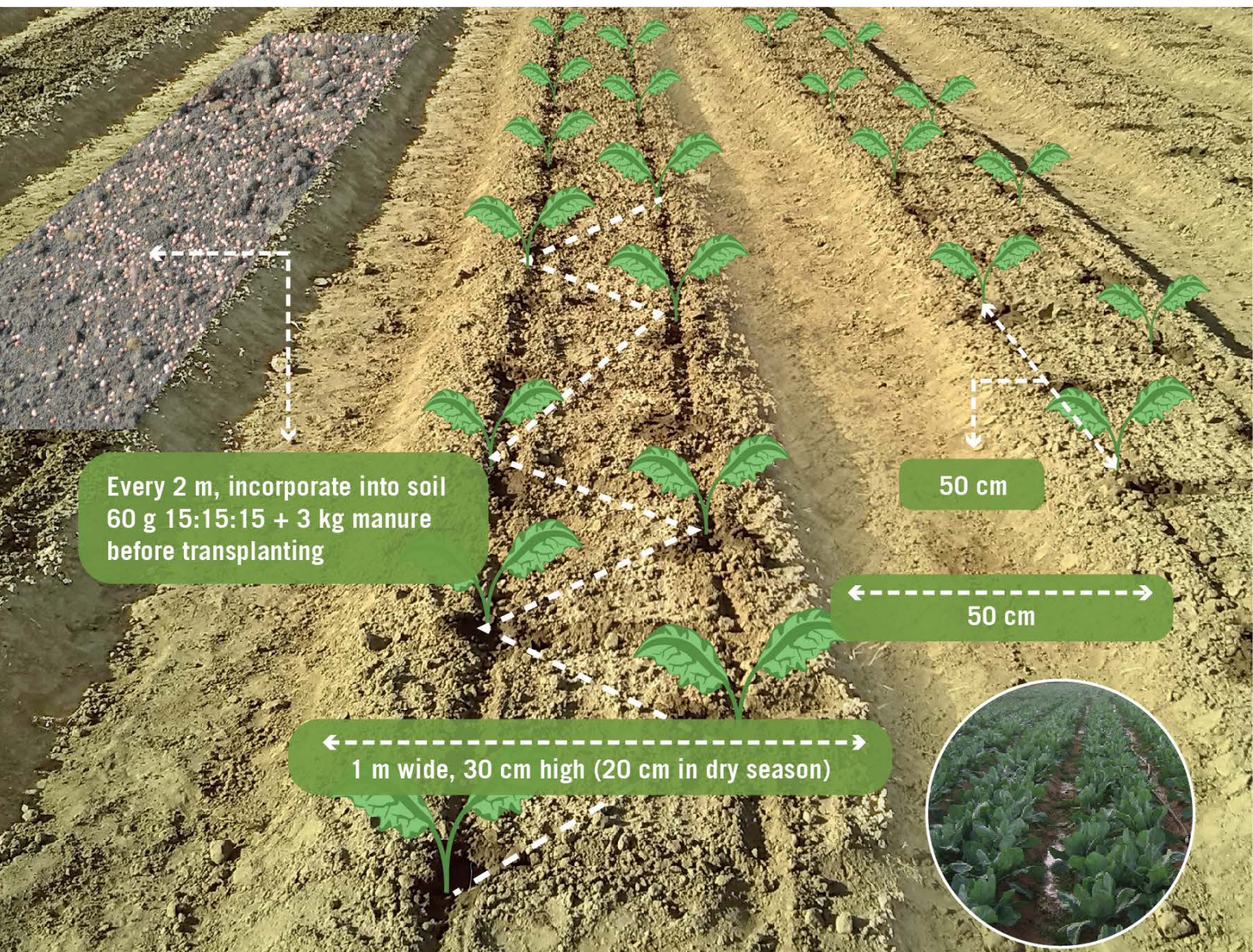
CAULIFLOWER

• Land Preparation

- » Narrow paths help with irrigation and drainage
- » Organic or plastic mulch may be installed to conserve soil moisture and minimize weed growth
- » 26,600 plants/ha (adjust according to the variety and season)



ENGLISH

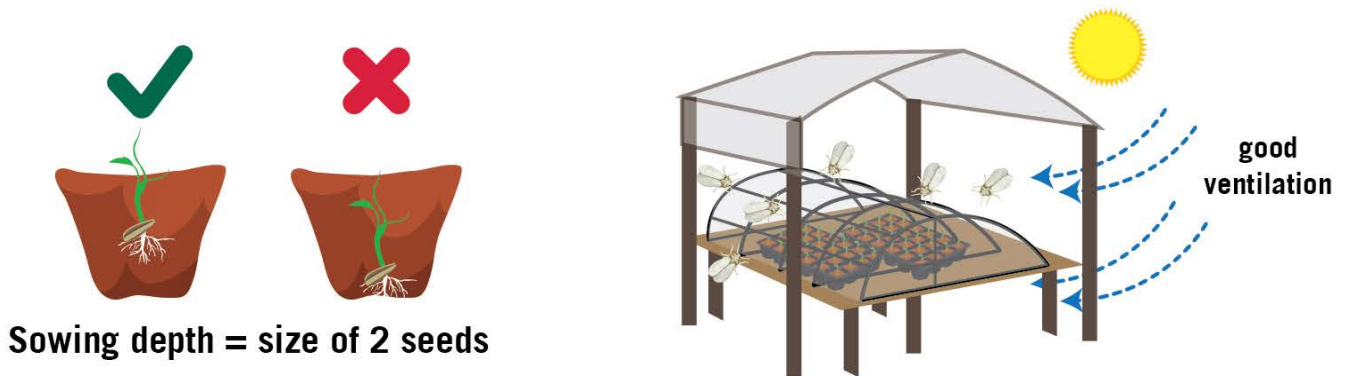


• Seedling Production

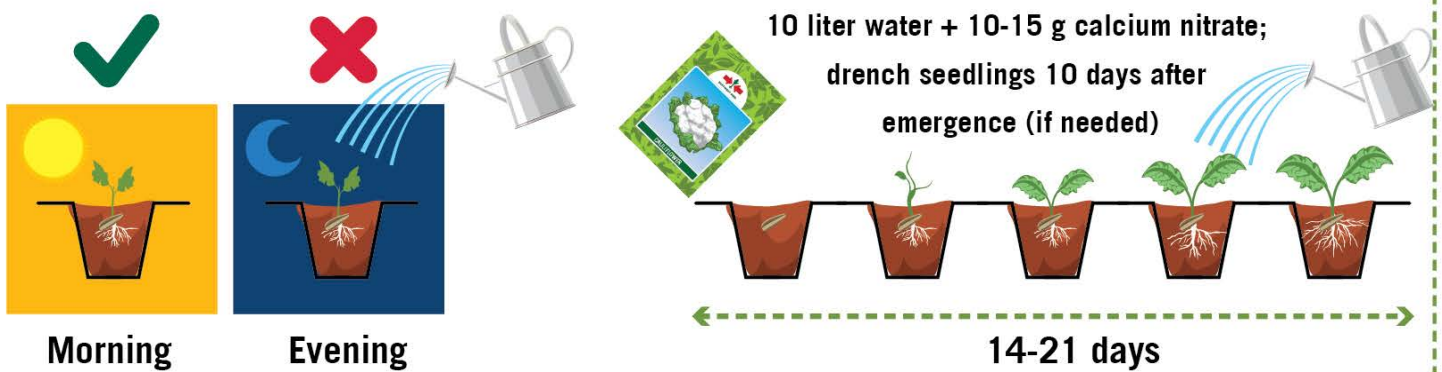
- ◆ Substrate preparation: Heat for 10 minutes or place in full sun for half a day, then fill tray



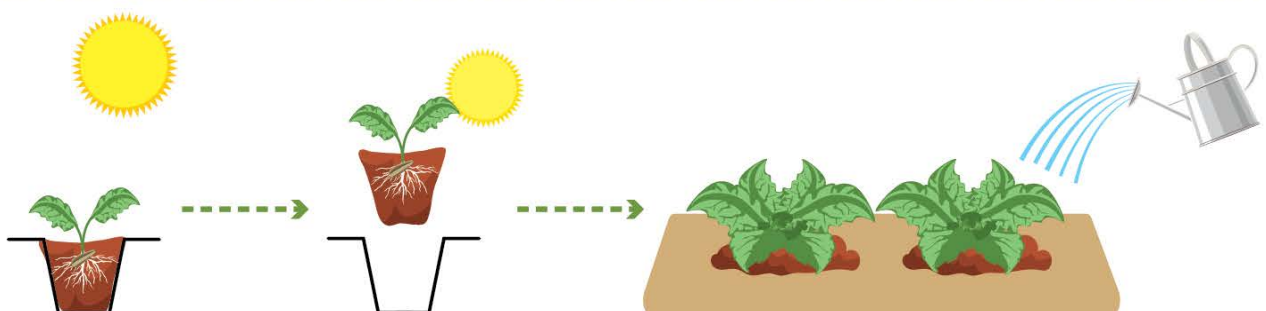
- ◆ Sow seeds and protect seedlings



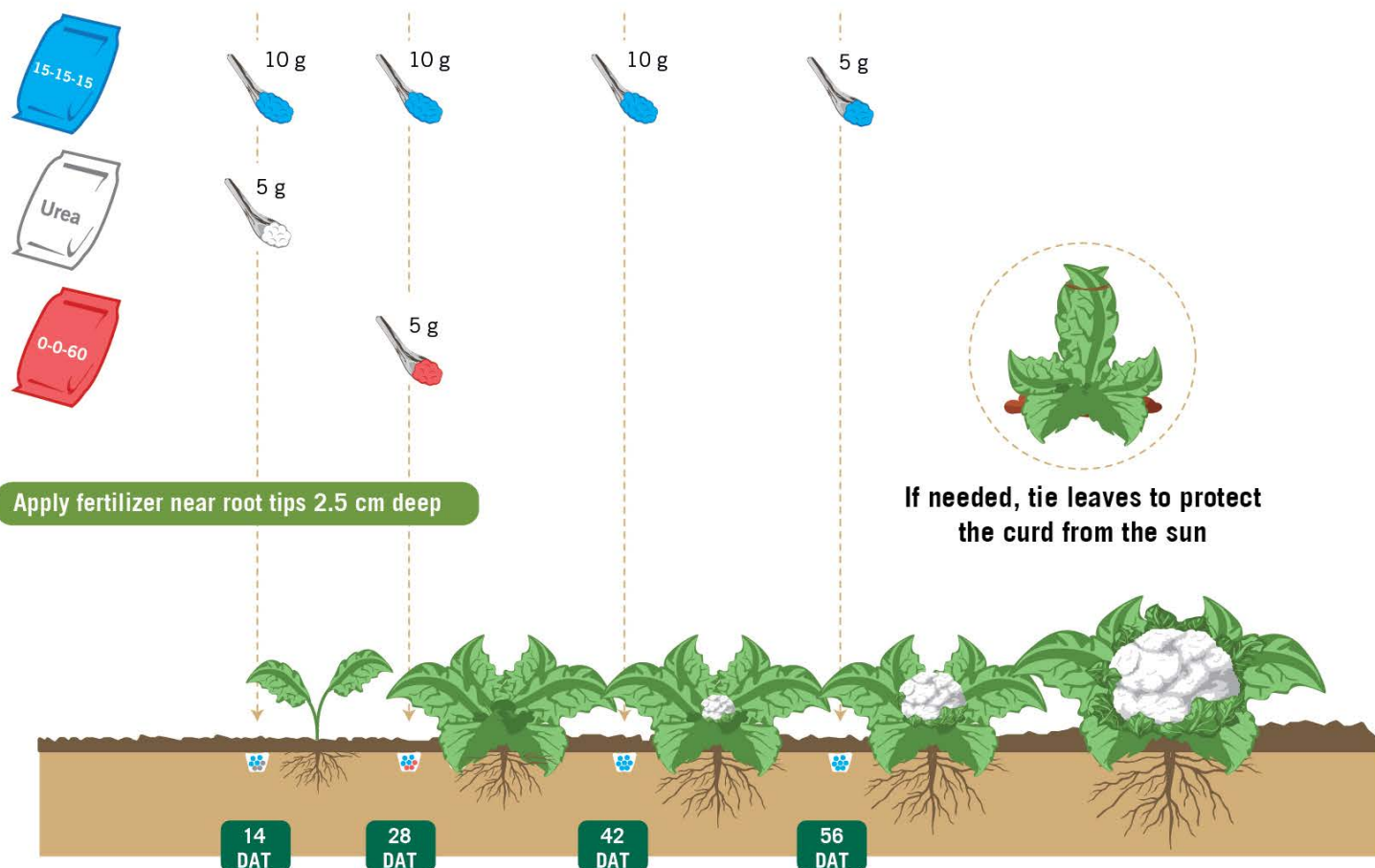
- ◆ Maintain constant moisture



- ◆ Reduce water and expose to more sun 5-7 days before transplanting late in the afternoon



• Fertilizer Application



Recommended amount based on crop optimum nutrient requirement and plant population of 26,600 per hectare. Adjust application according to season, soil conditions and plant growth status.

• Integrated Pest Management



- » Use sticky traps to monitor and mass trap insect pests
- » Use sweet trap or light trap for diamondback moth



To prevent infection from spreading, sick plants, old crops and weeds must be removed and destroyed.

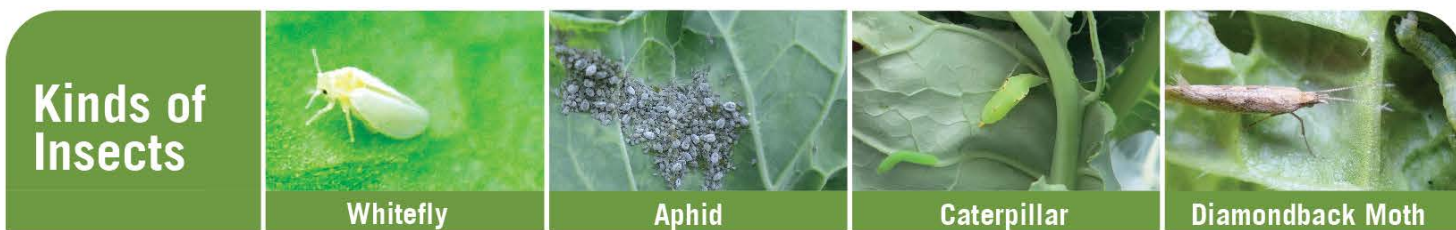


Crop rotation prevents build up of insect pests and diseases and restores soil fertility.

• Integrated Pest Management and Safe Use of Pesticides

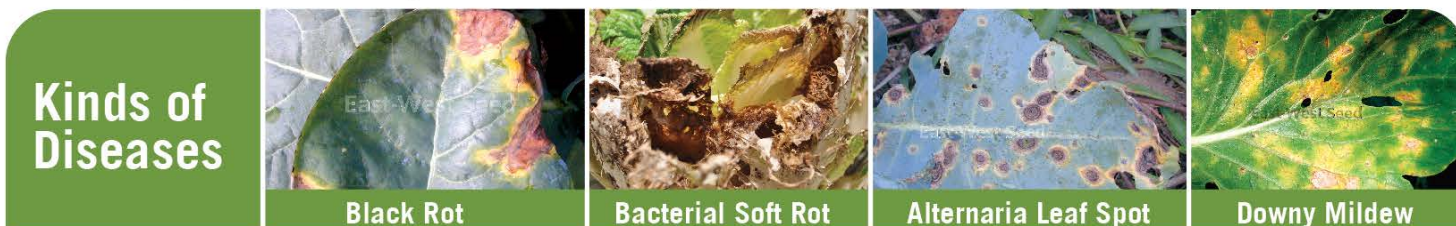
» Alternate MoA groups to prevent resistance

» Always read pesticide label and intended use (registered crop and pest)



Active Ingredient	MoA	Action	Whitefly	Aphid	Caterpillar	Diamondback Moth
Lambda-cyhalothrin	3A	SC	✓	✓	✓	✓
Dinotefuran	4A	S	✓	✓		
Spinosad	5	S			✓	✓
Spinetoram	5	SC			✓	✓
Abamectin	6	SC (slight S)			✓	✓
Thiocyclam oxalate	14	SC	✓	✓		
Chlorantraniliprole	28	S			✓	✓
Flubendiamide	28	S			✓	✓
<i>Bacillus thuringiensis</i>	11A	C			✓	✓
<i>Azadirachtin (neem extract)</i>	UN	unknown	✓	✓	✓	✓

Mode of Action (MoA) based from IRAC; SC (Stomach + Contact); S (Systemic)



Active Ingredient	MoA	Action	Remarks	Black Rot	Bacterial Soft Rot	Alternaria Leaf Spot	Downy Mildew
Copper-based Fungicides	M 01	P	For bacterial diseases: Use only when necessary; do not overuse to avoid potential resistance build up	✓	✓	✓	✓
Chlorothalonil	M 05	P	Maximum 4 times per crop cycle Tank mixed with preventive (Chlorothalonil or Mancozeb) High risk of resistance (only use 2 times per season)	No effective curative spray Manage with preventive measures like raising bed, crop rotation and sanitation Avoid overhead irrigation		✓	✓
Mancozeb	M 03	P					
Azoxystrobin	11	P + C					
Propamocarb	28	P + C					
Cymoxanil	27	C				✓	
Metalaxyl	4	P + C				✓	
<i>Bacillus subtilis</i>	BM02	P		✓	✓		✓

Mode of Action (MoA) based from FRAC; P = preventive (only effective when disease symptoms have not appeared yet), C = curative

- 1 **Wear protective gear**
- 2 **Good weather**
- 3 **Good nozzle**
- 4 **Wash after spraying**

<https://growhow.eastwestseed.com>

Copyright ©2021 by East-West Seed Foundation. All rights reserved.

Agrochemical recommendations have been developed in cooperation with Wageningen University & Research