



KNOWLEDGE  
TRANSFER

# Muhimman bayanai akan noman **Kokumba**

## • Sharan gona

- » Takaita tsakanin kunya yana taimakawa wajen yin banruwa da hana kwanciyar ruwa tsakanin kunya da kunya
- » Za a iya sanya robar shinkafa ko ledar rufe kunya domin rike laima a kasa da rage fitowar ciyayi
- » Asanya sandan tokorar shuka kwana 8-10 bayan dashe
- » Tushe 26,600 a kowacca hekta daya (zaka kula da Nau'in irin da kuma lokacin aikin)



HAUSA



A hada giram 80 na takin bature 15:15:15 da kilogiram 3 na ingantaccen takin gargajiya abinnee a kasa kafin a dasa a kowanne mita 2.

Santimita 50

Santimita 50

Fadin mita 1, bisa/tudu santimita 30 lokacin damuna (santimita 20 da rani).

# • Rainon iri

◆ A dumama kasa na tsawon mintuna 10 ko asanya a rana rabin wuni, sai a zuba a tiren shuka



Asa kasa kashi 1 zuwa 2



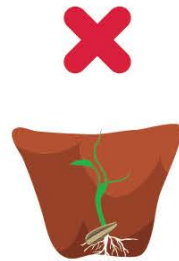
Asa kashi 1 rubabben takin gargajiya



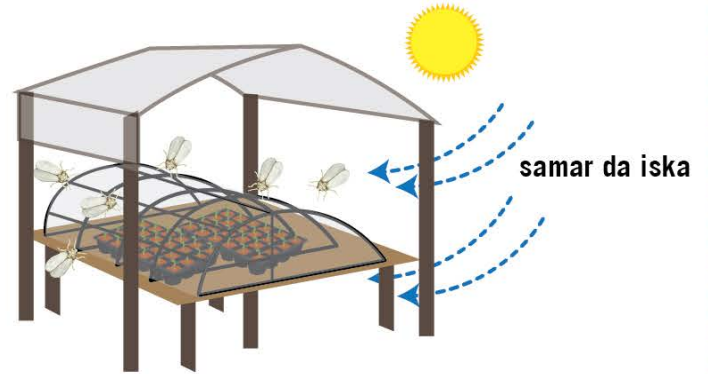
Asa kashi 1 kasa ko konannen buntun shinkafa



◆ A shuka kuma a samar da kariya

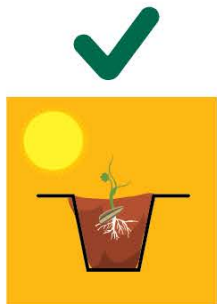


Tsawon ramon da za a binne iri kwatankwacin girman iri sau 2.

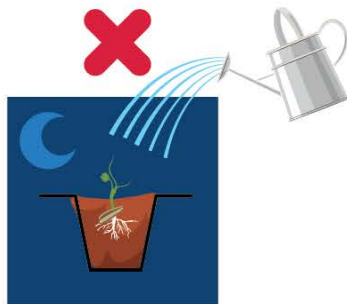


samar da iska

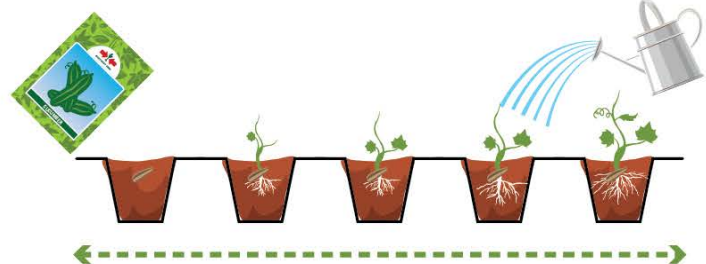
◆ Samar da danshi kowanna lokaci



Safiya

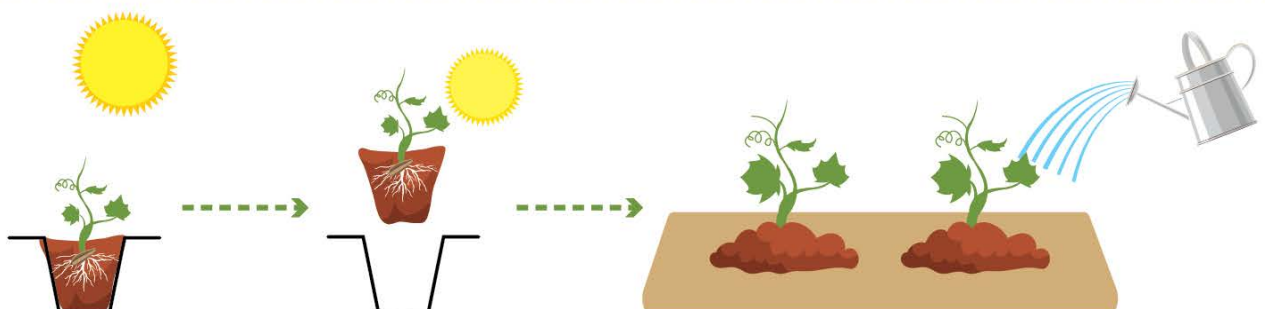


Yammaci

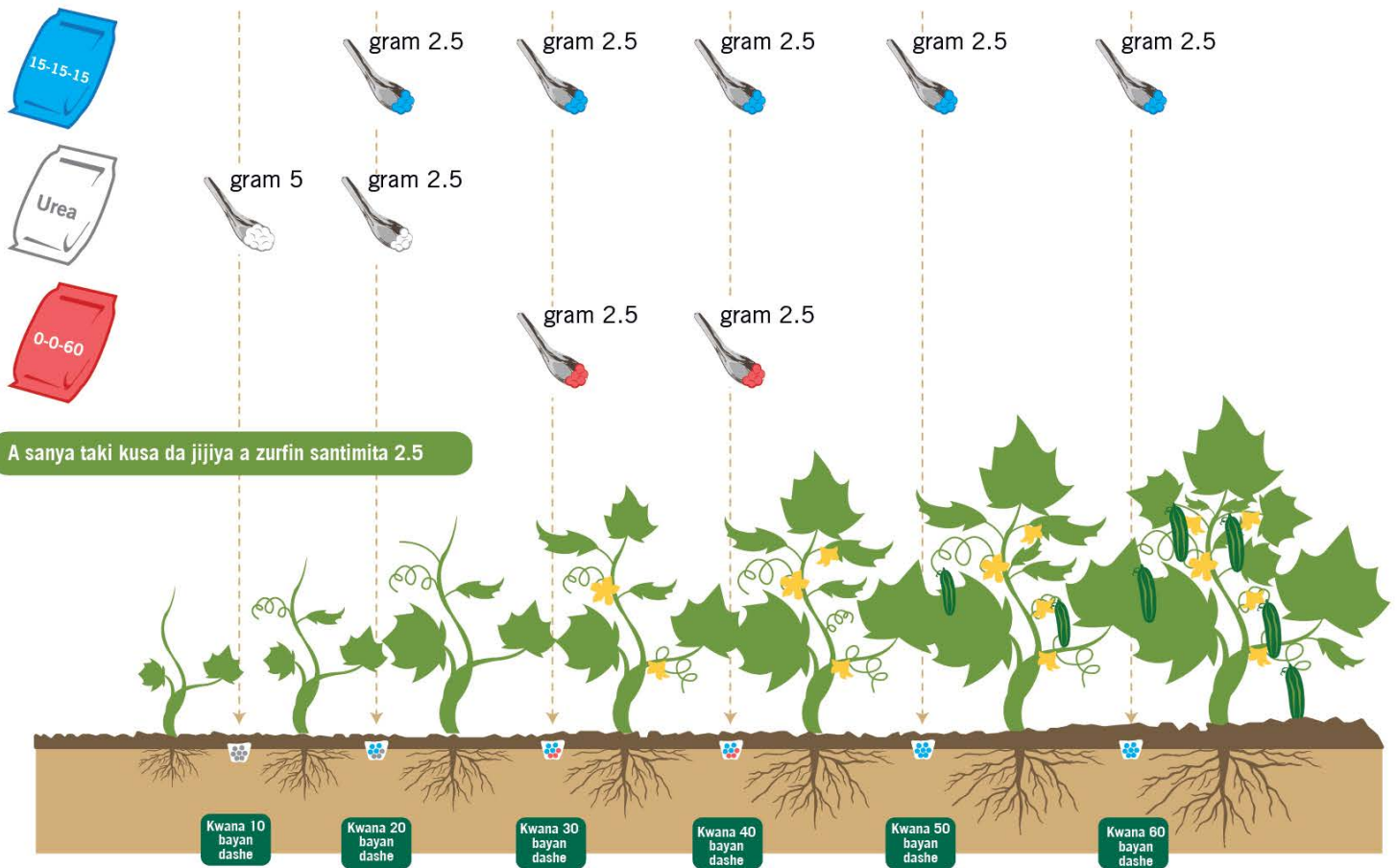


Kwanaki 8-10

◆ A rage yawan ban ruwa, kuma a sanya shi rana kwanaki 5-7 kafin ayi dashe da la'asar



# • Sanya taki



Yawan takin da akace asa anyi duba da sinadarin da shuka ke bukata da kuma tushen amfani 26,600 a kowane hecta. zaka daidaita adadin duba ga lokacin noman, Yanayin kasa da yanayin girman shuka

# • Hada hanyoyi da yawa domin magance kwari



- » Yin amfani da tarko mai gam domin gano/ kame kwari.
- » Domin hana yaduwar cututtuka a cire dukkan shukar da ta kamu da ciwo, gyauro da ciyawa, kuma a zubar/Binne.



Chanjin amfanin gona na hana karuwar kwari da cututtuka. Yana kuma inganta kasar noma.



Hada hanyoyi daban-daban don magance kwari da amfani da magungunan kashe kwari yadda yakamata

# • Arika can canza Nau'in magani don kada Kwaro ya daurewa Maganin.

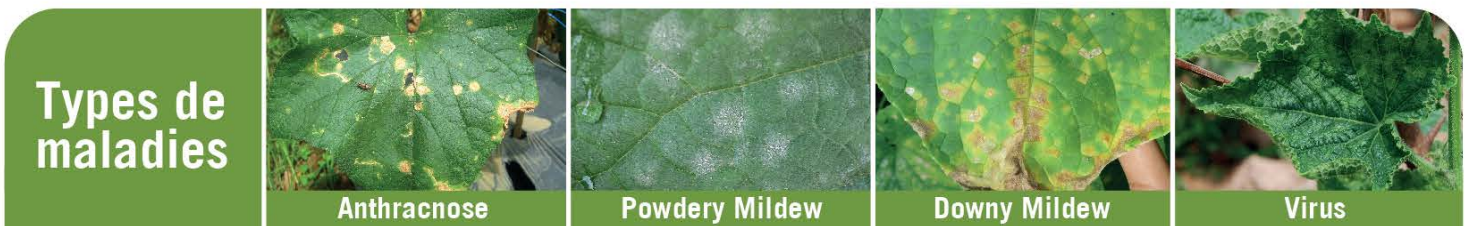
» Arika can canza Nau'in magani don kada Kwaro ya daurewa Maganin.

» Koda yausha a karanta rubutun robar magani da kuma amfaninsa (Shuka da kwari)



Ingantaccen	Ingantaccen	Yadda maganin yake aiki	Action	Thrip	Farin Kwaro	Darba/Aphid	Tsutsa	Kwaro mai side grange	Beetle	Fruit Fly
Lambda-cyhalothrin	3A	SC	✓	✓	✓	✓	✓	✓	✓	
Dinotefuran	4A	S	✓	✓	✓			✓		✓
Spinosad	5	S				✓	✓	✓		✓
Spinetoram	5	SC				✓	✓	✓		✓
Abamectin	6	SC (Kasa da S)	✓			✓	✓	✓	✓	
Thiocyclam oxalate	14	SC	✓	✓	✓			✓		
Chlorantraniliprole	28	S				✓				
Flubendiamide	28	S				✓				✓
<i>Bacillus thuringiensis</i>	11A	C				✓	✓			
<i>Azadirachtin (neem extract)</i>	UN	Babu masaniya	✓	✓	✓	✓	✓	✓	✓	✓

Yadda maganin yake aiki based from IRAC; SC (Mai illa dan yaci +Ya taba kwaro); S (Mai shiga cikin jiki)



Ingantaccen	Ingantaccen	Yadda maganin yake aiki	Aikin maganin	karin bayani	Anthracnose	Powdery Mildew	Downy Mildew	Virus
Copper-based Fungicides	M 01	K			✓	✓	✓	A kula da kwari masu daukar cutar virus (Darba da farin kwaro)
Chlorothalonil	M 05	K			✓	✓	✓	
Mancozeb	M 03	K			✓	✓	✓	
Azoxystrobin	11	K + C	kada a fesa sama da sau hufu (4) a tsawon kwanakin samar da shuka		✓	✓	✓	
Propamocarb	28	K + C					✓	
Cymoxanil	27	C	Ahada (Chlorothalonil or Mancozeb) a tanki daya				✓	
Metalaxyl	4	K + C	kwaro nada saurin daurewa maganin (Ayi amfani dashi sau biyu kawai a tsawon rayuwar shuka)				✓	
<i>Bacillus subtilis</i>	BM02	K			✓	✓	✓	

Yadda maganin yake aiki (FRAC); K= domin kariya (yana aikin ne idan alamar cuta bata bayyana ba), C = domin Magancewa

- Ayi amfani da cikakkun kayan kare lafiyan jiki.
- Yanayi mai kyau.
- Allurar fidda magani mai kyau
- Awanke jiki da kayan aiki bayan angama feshi.

<https://growhow.eastwestseed.com>

Mallakar Gidauniyar East West Seeds @2021.

Magungunan da aka ce ayi amfani da su ansamar dasu tare da hadin gwiwar Wageningen University & Research