



KNOWLEDGE
TRANSFER

Muhimman bayanai akan noman Yalo

• Sharan gona

- » Takaita tsakanin kunya yana taimakawa wajen yin banruwa da hana kwanciyar ruwa tsakanin kunya da kunya
- » Za a iya sanya robar shinkafa ko ledar rufe kunya domin rike laima a kasa da rage fitowar ciyayi
- » Asanya sandan tokorar shuka kwana 8-10 bayan dashe
- » Tushe 17,700 a kowacca hekta daya (zaka kula da Nau'in irin da kuma lokacin aikin)



HAUSA



A hada giram 80 na takin bature 15:15:15 da kilogram 3 na ingantaccen takin gargajiya abinne a kasa kafin a dasa a kowane mita 2.

Santimita 50

Santimita 50

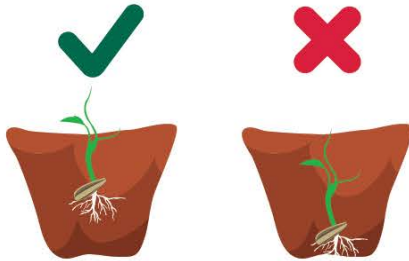
Fadin mita 1, bisa/tudu santimita 30 lokacin damuna (santimita 20 da rani).

• Rainon iri

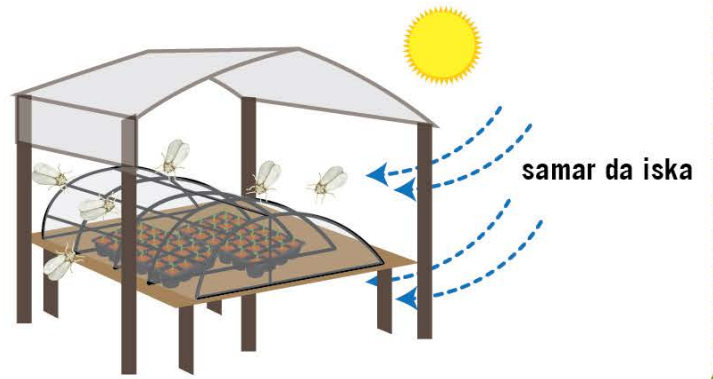
- ◆ A dumama kasa na tsawon mintuna 10 ko asanya a rana rabin wuni, sai a zuba a tiren shuka



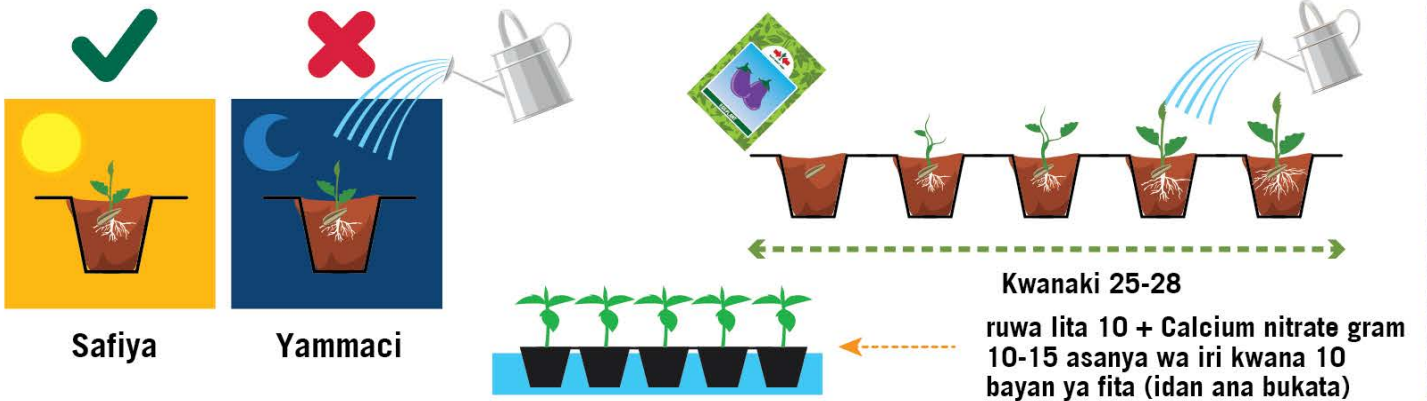
- ◆ A shuka kuma a samar da kariya



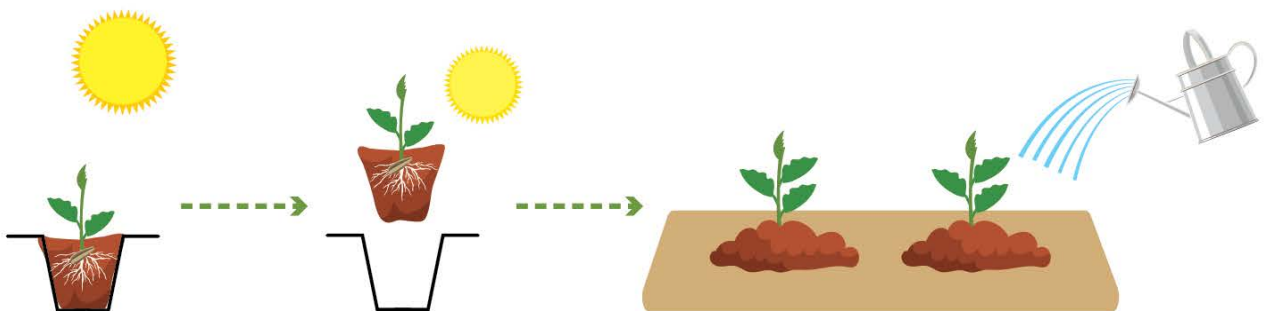
Tsawon ramon da za a binne iri kwatankwacin girman iri sau 2.



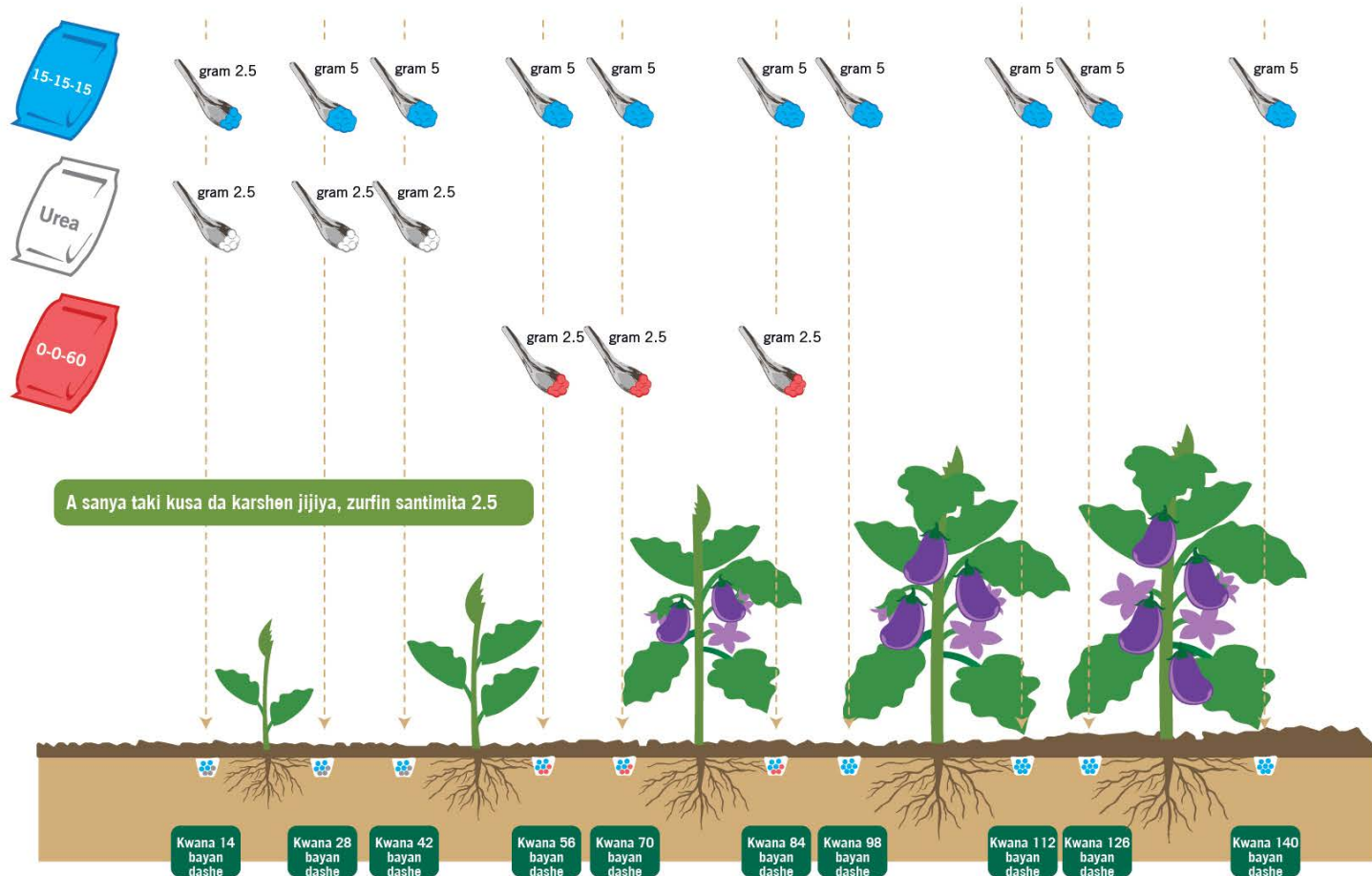
- ◆ Samar da danshi kowanna lokaci



- ◆ A rage yawan ban ruwa, kuma a sanya shi rana kwanaki 5-7 kafin ayi dashe da la'asar



• Sanya taki



Yawan takin da akace asa anyi duba da sinadin da shuka ke bukata da kuma tushen amfani 17,700 a kowane hecta. zaka daidaita adadin duba ga lokacin noman, Yanayin kasa da yanayin girman shuka

• Hada hanyoyi da yawa domin magance kwari



- » Yin amfani da tarko mai gam domin gano/ kame kwari.
- » Domin hana yaduwar cututtuka a cire dukkan shukar da ta kamu da ciwo, gyauro da ciyawa, kuma a zubar/Binne.



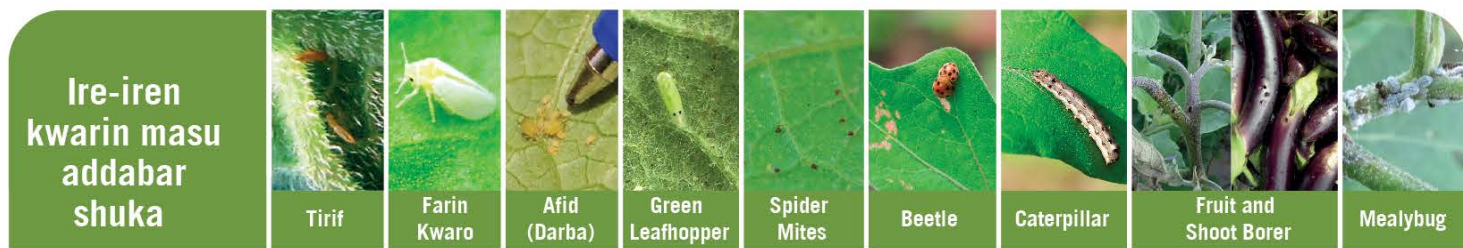
Chanjin amfanin gona na hana karuwar kwari da cututtuka. Yana kuma inganta kasar noma.



Hada hanyoyi daban-daban don magance kwari da amfani da magungunan kashe kwari yadda yakamata

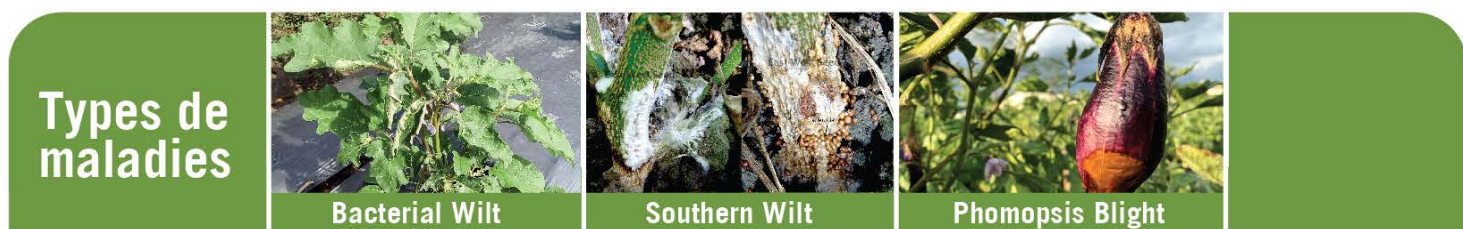
• Arika can canza Nau'in magani don kada Kwaro ya daurewa Maganin.

- » Arika can canza Nau'in magani don kada Kwaro ya daurewa Maganin.
- » Koda yaushe a karanta rubutun robar magani da kuma amfaninsa (Shuka da kwari)



Ingantaccen	Ingantaccen	Yadda maganin yake aiki	Action	Thrips	Farin Kwaro	Afid (Darba)	Green Leafhopper	Spider Mites	Beetle	Caterpillar	Fruit and Shoot Borer	Mealybug
Lambda-cyhalothrin	3A	SC	✓	✓	✓	✓	✓	✓	✓	✓	✓	✓
Dinotefuran	4A	S	✓	✓	✓	✓						✓
Spinosad	5	S								✓	✓	✓
Spinetoram	5	SC								✓	✓	✓
Abamectin	6	SC (Kasa da S)	✓					✓	✓	✓	✓	
Thiocyclam oxalate	14	SC	✓	✓	✓	✓						
Chlorantraniliprole	28	S								✓	✓	
Flubendiamide	28	S								✓	✓	
<i>Bacillus thuringiensis</i>	11A	C								✓	✓	✓
<i>Azadirachtin (neem extract)</i>	UN	Babu masaniya	✓	✓	✓	✓	✓	✓	✓	✓	✓	✓

Yadda maganin yake aiki a cewar IRAC; SC (Mai illa dan yaci +Ya taba kwaro); S (Mai shiga cikin jiki)



Ingantaccen	Ingantaccen	Yadda maganin yake aiki	Action	Remarks	Bacterial Wilt	Southern Wilt	Phomopsis Blight
Copper-based Fungicides	M 01	K		For bacterial diseases: Use only when necessary; do not overuse to avoid potential resistance build up	✓		✓
Chlorothalonil	M 05	K			Ka magance kwarin da ke yada Cutittika kamar farin kwana		✓
Mancozeb	M 03	K					✓
Azoxystrobin	11	K + C		kada a fesa sama da sau hufu (4) a tsawon kwanakin samar da shuka		✓	✓
<i>Bacillus subtilis</i>	BM02	K			✓		
<i>Trichoderma spp.</i>	BM02	K				✓	

Yadda maganin yake aiki (FRAC); K= domin kariya (yana aikin ne idan alamar cuta bata bayyana ba), C = domin Magancewa

- Ayi amfani da cikakkun kayan kare lafiyan jiki.
- Yanayi mai kyau.
- Allurar fidda magani mai kyau
- Awanke jiki da kayan aiki bayan angama feshi.

<https://growhow.eastwestseed.com>

Mallakar Gidauniyar East West Seeds ©2021.

Magungunan da aka ce ayi amfani da su ansamar dasu tare da hadin gwiwar Wageningen University & Research