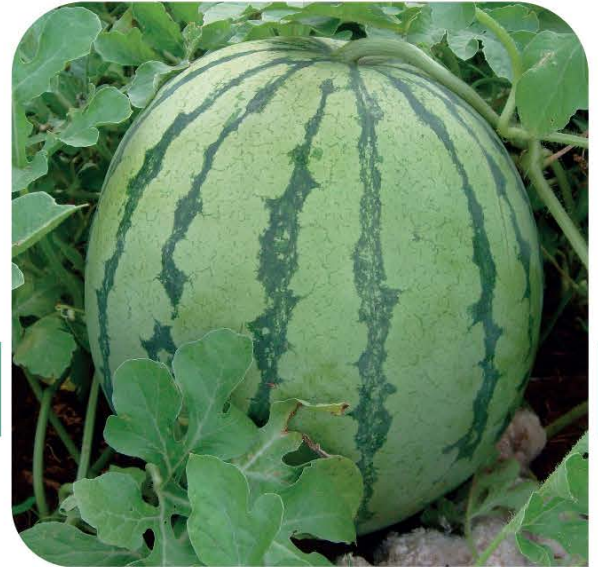




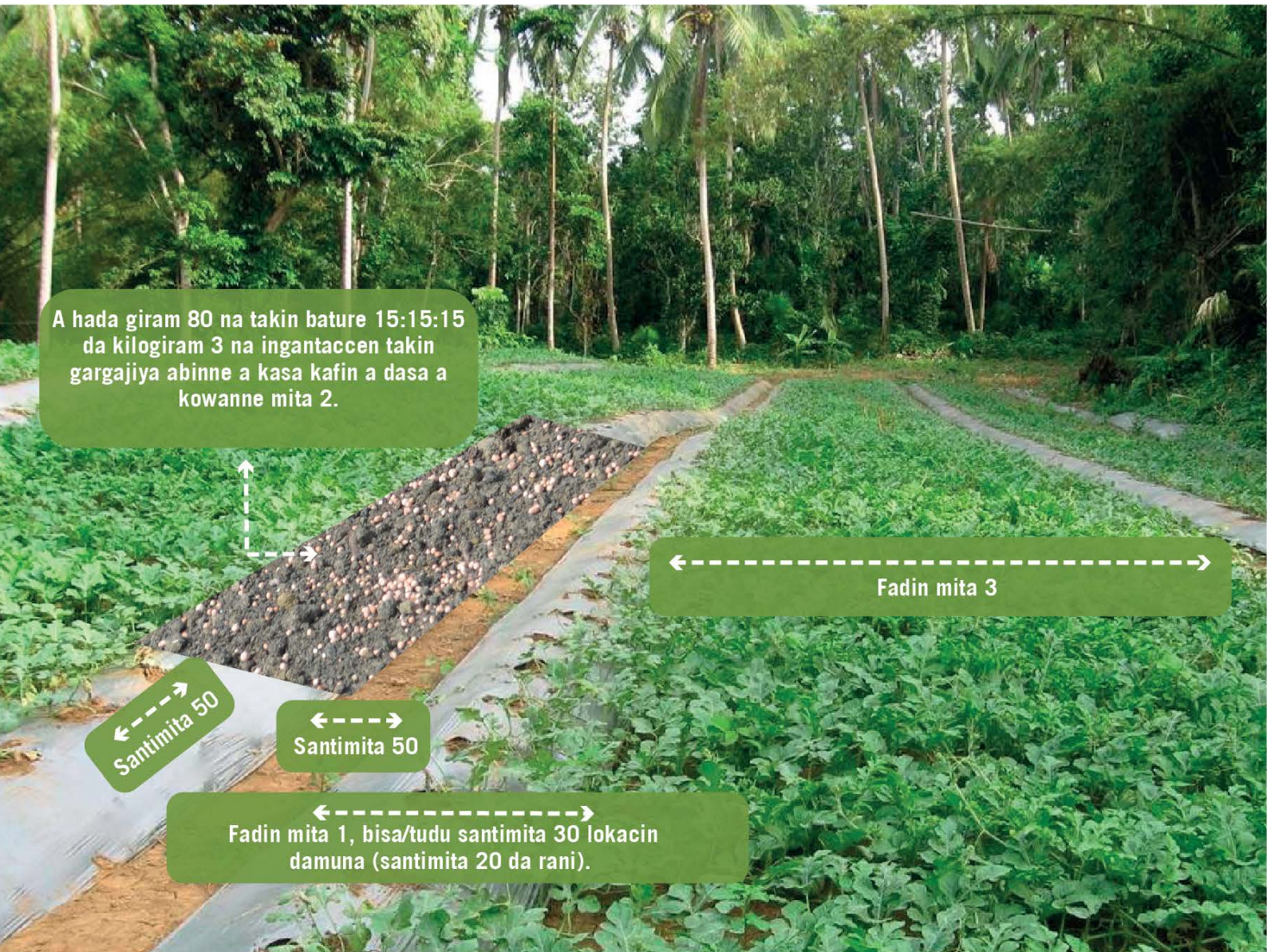
Muhimman bayanai akan noman **Kan kana**

• Sharan gona

- » Takaita tsakanin kunya yana taimakawa wajen yin banruwa da hana kwanciyar ruwa tsakanin kunya da kunya
- » Za a iya sanya robar shinkafa ko ledar rufe kunya domin riƙe laima a kasa da rage fitowar ciyayi
- » Tushe 7,200 a kowacca hekta daya (zaka kula da Nau'in irin da kuma lokacin aikin)



HAUSA



A hada giram 80 na takin bature 15:15:15 da kilogram 3 na ingantaccen takin gargajiya abinne a kasa kafin a dasa a kowane mita 2.

Santimita 50

Santimita 50

Fadin mita 1, bisa/tudu santimita 30 lokacin damuna (santimita 20 da rani).

Fadin mita 3

• Rainon iri

◆ A dumama kasa na tsawon mintuna 10 ko asanya a rana rabin wuni, sai a zuba a tiren shuka



Asa kasa kashi 1 zuwa 2



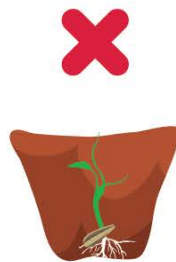
Asa kashi 1 rubabben takin gargajiya



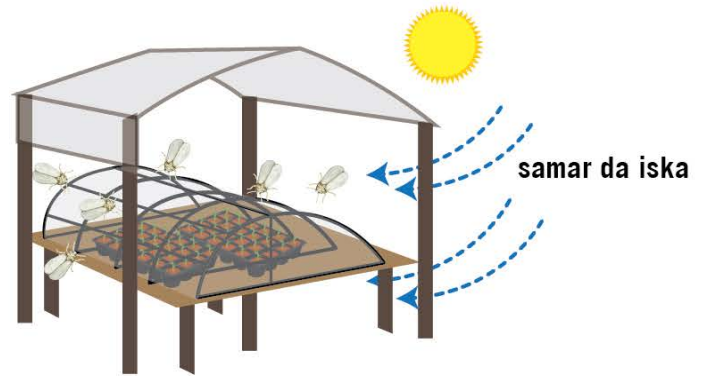
Asa kashi 1 kasa ko konannen buntun shinkafa



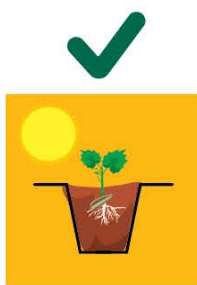
◆ A shuka kuma a samar da kariya



Tsawon ramın da za a binne iri kwatankwacin girman iri sau 2.



◆ Samar da danshi kowanna lokaci



Safiya

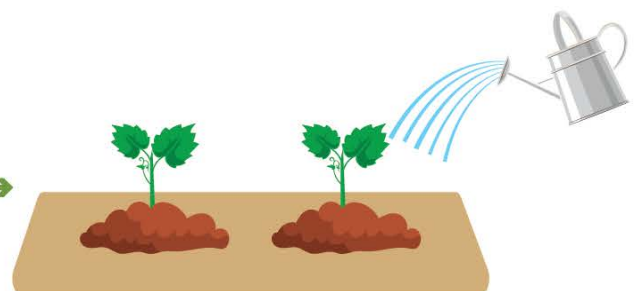
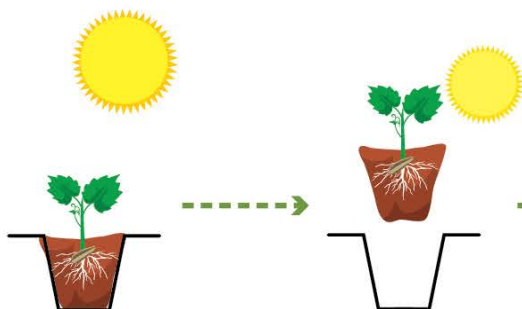


Yammaci



Kwanaki 8-10

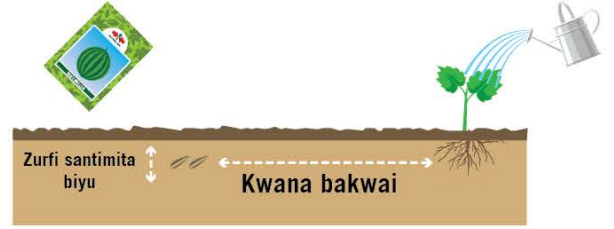
◆ A rage yawan ban ruwa, kuma a sanya shi rana kwanaki 2-3 kafin ayi dashe da la'asar



• Shuka kai tsaye



» Ashuka kwaya 1-2 a tsakani.
A yi ciro a bar daya kacal idan
tsiro ya kai tsawon santimita
10.



• Sanya taki



Giram 10

Giram 10

Giram 10

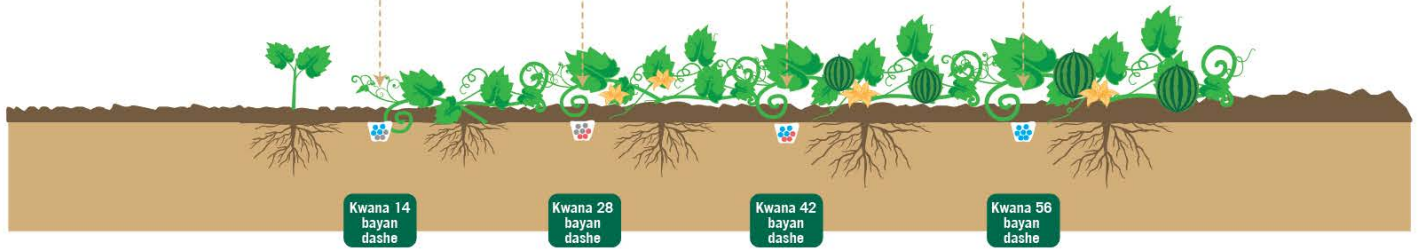
Giram 10

Giram 10

Giram 10

Sai abar reshe Mafi yawa
guda 3 a kowanna tushe

A sanya taki kusa da karshen jijiya, zurfin santimita 2.5



Yawan takin da akace asa anyi duba da sinadarin da shuka ke bukata da kuma tushen amfani 7200 a kowane hecta.
zaka daidaita adadin duba ga lokacin noman, Yanayin kasa da yanayin girman shuka

• Hada hanyoyi da yawa domin magance kwari



- » Yin amfani da tarko mai gam domin gano/ kame kwari.
- » Domin hana yaduwar cututtuka a cire dukkan shukar da ta kamu da ciwo, gyauro da ciyawa, kuma a zubar/Binne.



Chanjin amfanin gona na hana karuwar
kwari da cututtuka. Yana kuma inganta
kasar noma.



Hada hanyoyi daban-daban don magance
kwari da amfani da magungunan kashe
kwari yadda yakamata

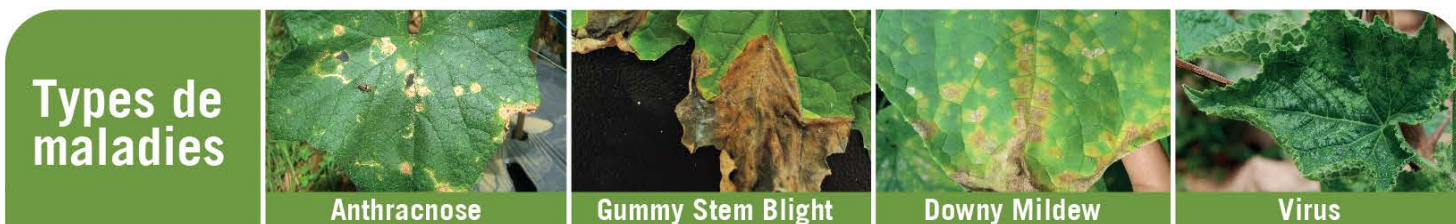
• Arika can canza Nau'in magani don kada Kwaro ya daurewa Maganin.

- » Arika can canza Nau'in magani don kada Kwaro ya daurewa Maganin.
- » Koda yausha a karanta rubutun robar magani da kuma amfaninsa (Shuka da kwari)



Ingantaccen	Ingantaccen	Yadda maganin yake aiki	Action	Thrip	Farin Kwaro	Darba/Aphid	Tsutsa	Kwaro mai side grange	Buzuzu	Kuda
Lambda-cyhalothrin		3A	SC	✓	✓	✓	✓	✓	✓	
Dinotefuran		4A	S	✓	✓	✓		✓		✓
Spinosad		5	S				✓	✓		✓
Spinetoram		5	SC				✓	✓		✓
Abamectin		6	SC (Kasa da S)	✓			✓	✓	✓	
Thiocyclam oxalate		14	SC	✓	✓	✓		✓		
Chlorantraniliprole		28	S				✓			
Flubendiamide		28	S				✓			✓
<i>Bacillus thuringiensis</i>		11A	C				✓			
<i>Azadirachtin (neem extract)</i>		UN	Babu masaniya	✓	✓	✓	✓	✓	✓	✓

Yadda maganin yake aiki a cewar IRAC; SC (Mai illa dan yaci +Ya taba kwaro); S (Mai shiga cikin jiki)



Ingantaccen	Ingantaccen	Yadda maganin yake aiki	Action	Remarks	Anthracnose	Gummy Stem Blight	Downy Mildew	Virus
Copper-based Fungicides		M 01	K		✓	✓	✓	Manage insect vectors like aphids and thrips
Chlorothalonil		M 05	K		✓	✓	✓	
Mancozeb		M 03	K		✓	✓	✓	
Azoxystrobin		11	K + C	kada a fesa sama da sau huɗu (4) a tsawon kwanakin samar da shuka	✓	✓	✓	
Propamocarb		28	K + C				✓	
Cymoxanil		27	C	Ahada (Chlorothalonil or Mancozeb) a tanki daya			✓	
Metalaxyl		4	K + C	kwaro nada saurin daurewa maganin (Ayi amfani dashi sau biyu kawai a tsawon rayuwar shuka)			✓	
<i>Bacillus subtilis</i>		BM02	K		✓		✓	

Yadda maganin yake aiki (FRAC); K= domin kariya (yana aikin ne idan alamar cuta bata bayyana ba), C = domin Magancewa

- 1** Ayi amfani da cikakkun kayan kare lafiyan jiki.
- 2** Yanayi mai kyau.
- 3** Allurar fidda magani mai kyau
- 4** Awanke jiki da kayan aiki bayan angama feshi.

<https://growhow.eastwestseed.com>

Mallakar Gidauniyar East West Seeds @2021.

Magungunan da aka ce ayi amfani da su ansamar dasu tare da hadin gwiwar Wageningen University & Research