



KNOWLEDGE
TRANSFER

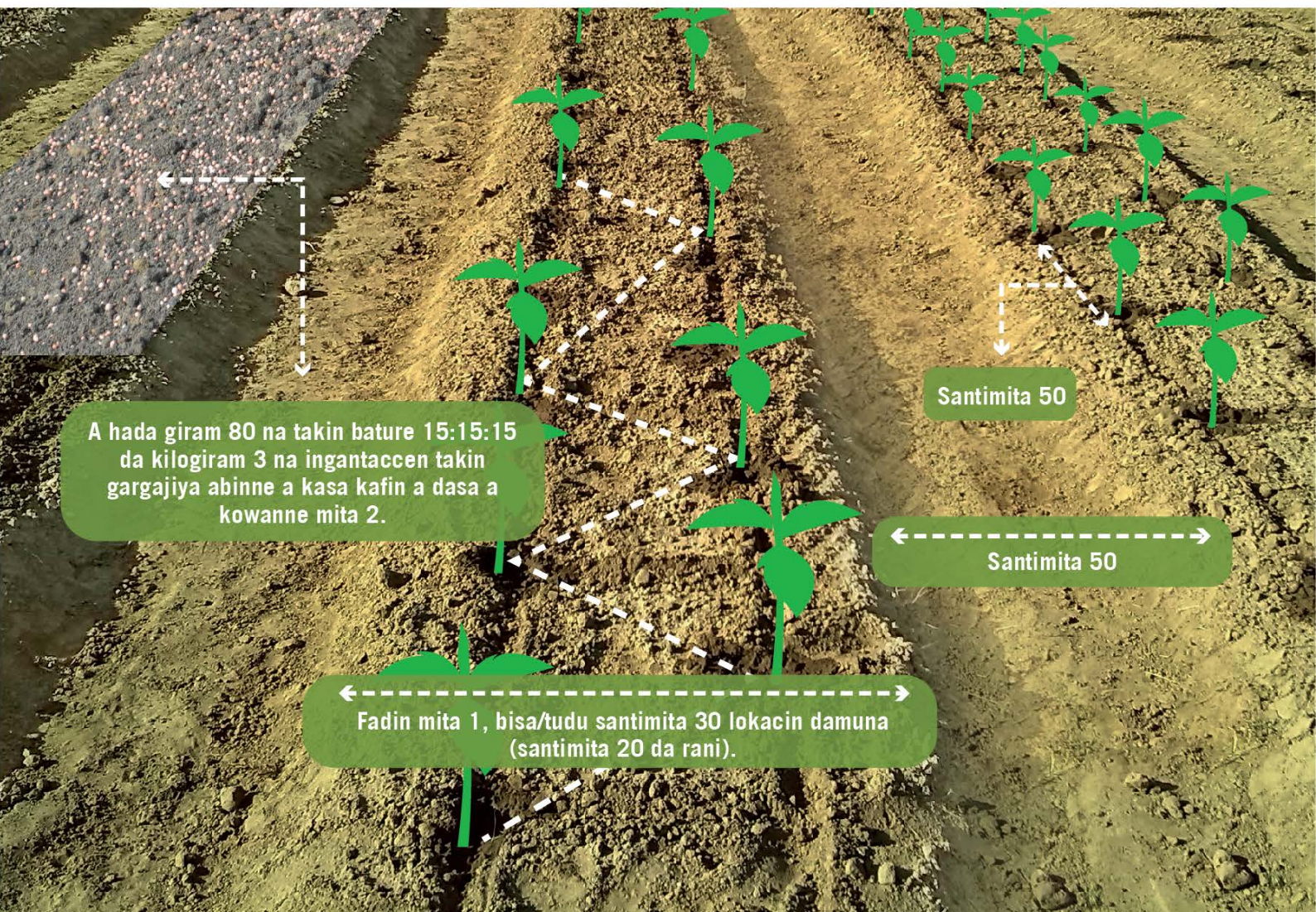
Muhimman bayanai akan noman Tumahir

• Sharan gona

- » Takaita tsakanin kunya yana taimakawa wajen yin banruwa da hana kwanciyar ruwa tsakanin kunya da kunya
- » Za a iya sanya robar shinkafa ko ledar rufe kunya domin riƙe laima a kasa da rage fitowar ciyayi
- » Asanya sandan tokorar shuka kwana 8-10 bayan dashe
- » Tushe 26,600 a kowacca hekta daya (zaka kula da Nau'in irin da kuma lokacin aikin)



HAUSA



A hada giram 80 na takin bature 15:15:15 da kilogram 3 na ingantaccen takin gargajiya abin ne a kasa kafin a dasa a kowane mita 2.

Santimita 50

Santimita 50

Fadin mita 1, bisa/tudu santimita 30 lokacin damuna (santimita 20 da rani).

• Rainon iri

◆ A dumama kasa na tsawon mintuna 10 ko asanya a rana rabin wuni, sai a zuba a tiren shuka



Asa kasa kashi 1 zuwa 2



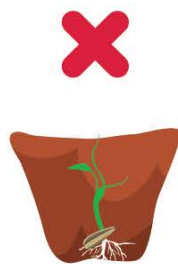
Asa kashi 1 rubabben takin gargajiya



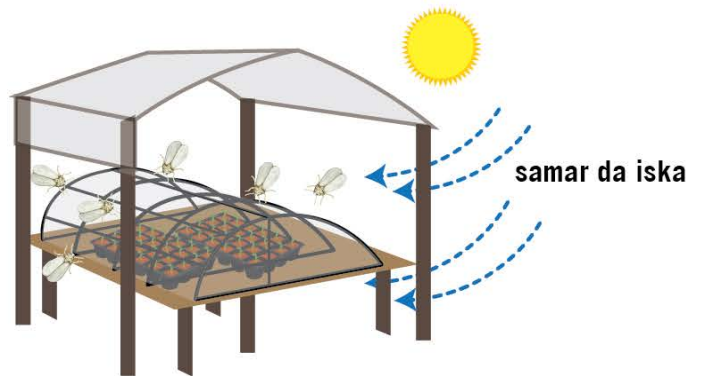
Asa kashi 1 kasa ko konannen buntun shinkafa



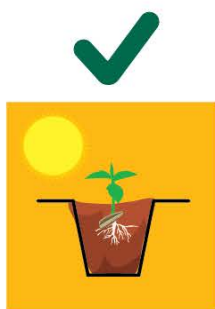
◆ A shuka kuma a samar da kariya



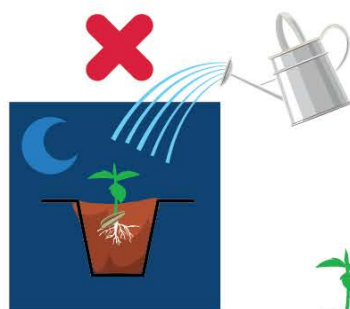
Tsawon ramin da za a binne iri kwatankwacin girman iri sau 2.



◆ Samar da danshi kowanna lokaci



Safiya



Yammaci

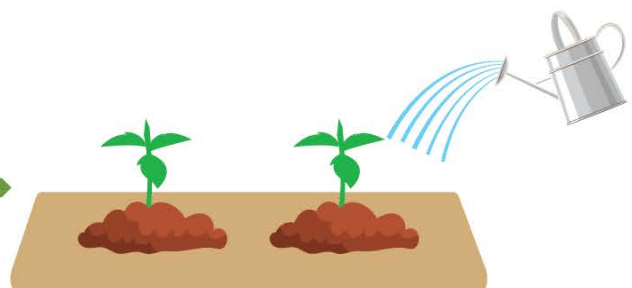
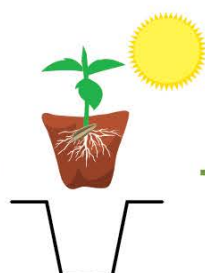


Kwanaki 25-28



ruwa lita 10 + Calcium nitrate gram 10-15 asanya wa iri kwana 10 bayan ya fita (idan ana bukata)

◆ A rage yawan ban ruwa, kuma a sanya shi rana kwanaki 5-7 kafin ayi dashe da la'asar



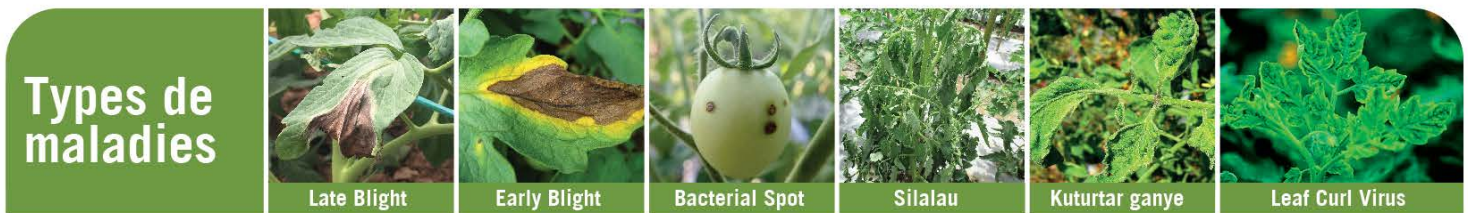
• Arika can canza Nau'in magani don kada Kwaro ya daurewa Maganin.

- » Arika can canza Nau'in magani don kada Kwaro ya daurewa Maganin.
- » Koda yausha a karanta rubutun robar magani da kuma amfaninsa (Shuka da kwari)



Ingantaccen Ingantaccen	Yadda maganin yake aiki	Action	Afid (Darba)	Farin Kwaro	Tsutsa	Tsutsar sharon	Kwaro mai side ganye	Red Spider Mites
Lambda-cyhalothrin	3A	SC	✓	✓	✓	✓	✓	✓
Dinotefuran	4A	S	✓	✓			✓	
Spinosad	5	S			✓	✓	✓	
Spinetoram	5	SC			✓	✓	✓	
Abamectin	6	SC (Kasa da S)			✓	✓	✓	✓
Thiocyclam oxalate	14	SC	✓	✓			✓	
Chlorantraniliprole	28	S			✓	✓		
Flubendiamide	28	S			✓	✓		
<i>Bacillus thuringiensis</i>	11A	C			✓	✓		
<i>Azadirachtin (neem extract)</i>	UN	Babu masaniya	✓	✓	✓	✓	✓	✓

Yadda maganin yake aiki a cewar IRAC; SC (Mai illa dan yaci +Ya taba kwaro); S (Mai shiga cikin jiki)



Ingantaccen Ingantaccen	Yadda maganin yake aiki	Action	karin bayani	Late Blight	Early Blight	Bacterial Spot	Silalau	Kuturtar ganye	Leaf Curl Virus
Copper-based Fungicides	M 01	K	Domin cutar baktirya: ayi amfani dashi; in yazama dole kada azuba fiye da yadda yakamata sa don gujewa dauriyar maganin.	✓	✓	✓	✓		
Chlorothalonil	M 05	K		✓	✓				
Mancozeb	M 03	K		✓	✓				
Azoxystrobin	11	K + C	kada a fesa sama da sau hufu (4) a tsawon kwanakin samar da shuka	✓				Aguji shan taba a gona	A kula da Farin kwaro
Propamocarb	28	K + C		✓					
Cymoxanil	27	C	Ahada (Chlorothalonil or Mancozeb) a tanki daya	✓					
Metalaxyl	4	K+ C	kwaro nada saurin daurewa maganin (Ayi amfani dashi sau biyu kawai a tsawon rayuwar shuka).	✓					
<i>Bacillus subtilis</i>	BM02	K		✓	✓	✓	✓		

Yadda maganin yake aiki (FRAC); K= domin kariya (yana aikin ne idan alamar cuta bata bayyana ba), C = domin Magancewa

- 1** Ayi amfani da cikakkun kayan kare lafiyan jiki.
- 2** Yanayi mai kyau.
- 3** Allurar fidda magani mai kyau
- 4** Awanke jiki da kayan aiki bayan angama feshi.

<https://growhow.eastwestseed.com>

Mallakar Gidauniyar East West Seeds @2021.

Magungunan da aka ce ayi amfani da su ansamar dasu tare da hadin gwiwar Wageningen University & Research