



KNOWLEDGE  
TRANSFER

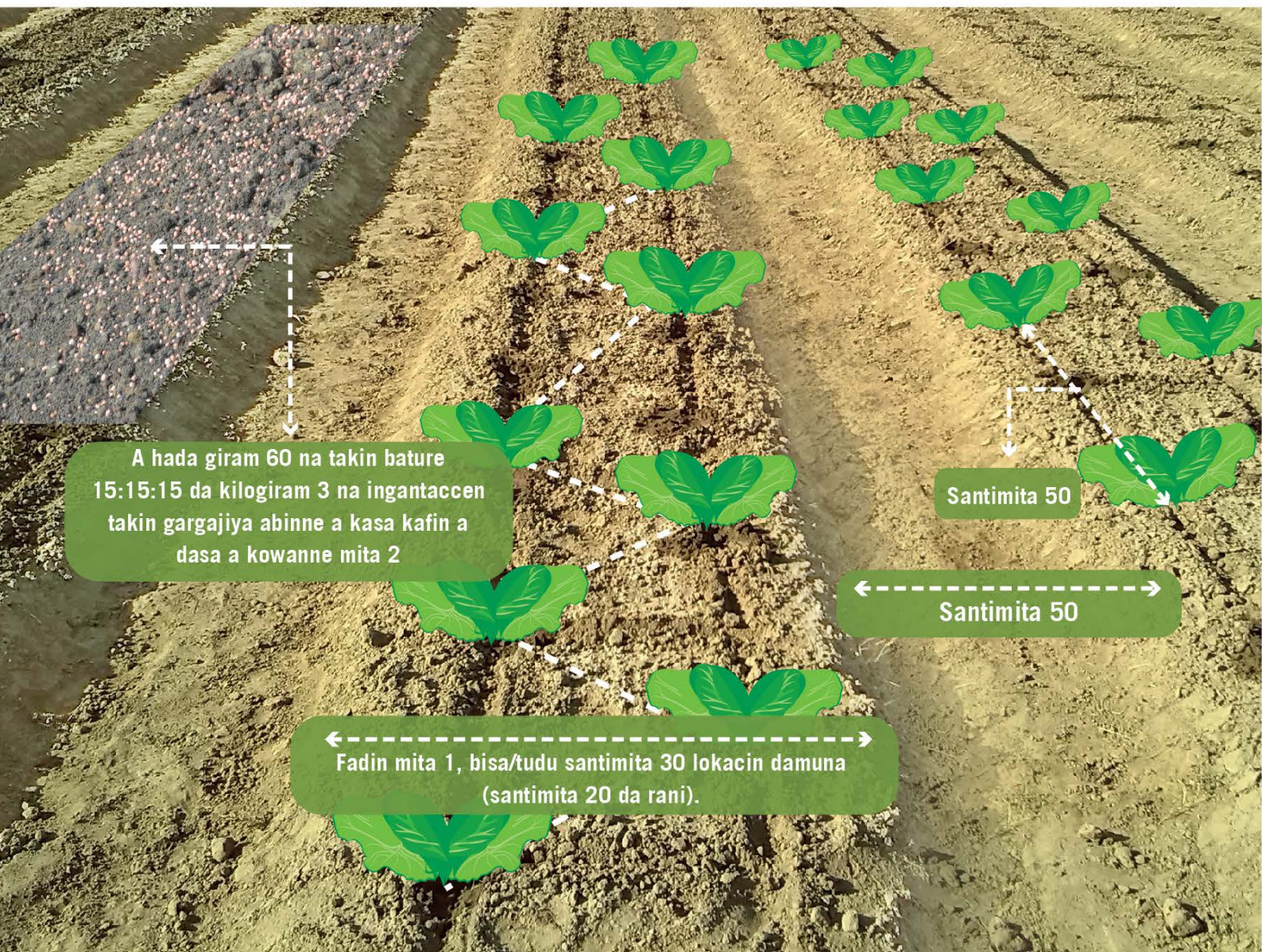
# Muhimman bayanai akan noman Kabeji

## • Sharan gona

- » Takaita tsakanin kunya yana taimakawa wajen yin banruwa da hana kwanciyar ruwa tsakanin kunya da kunya
- » Za a iya sanya robar shinkafa ko ledar rufe kunya domin rike laima a kasa da rage fitowar ciyayi
- » Tushe 26,600 a kowacca hekta daya (zaka kula da Nau'in irin da kuma lokacin aikin)



HAUSA



A hada giram 60 na takin bature 15:15:15 da kilogiram 3 na ingantaccen takin gargajiya abinne a kasa kafin a dasa a kowane mita 2

Santimita 50

Santimita 50

Fadin mita 1, bisa/tudu santimita 30 lokacin damuna (santimita 20 da rani).

# • Rainon iri

◆ A dumama kasa na tsawon mintuna 10 ko asanya a rana rabin wuni, sai a zuba a tiren shuka



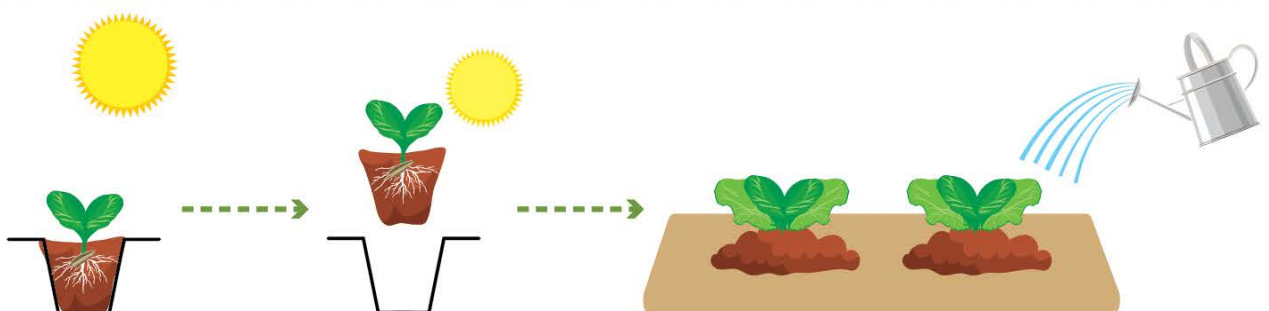
◆ A shuka kuma a samar da kariya



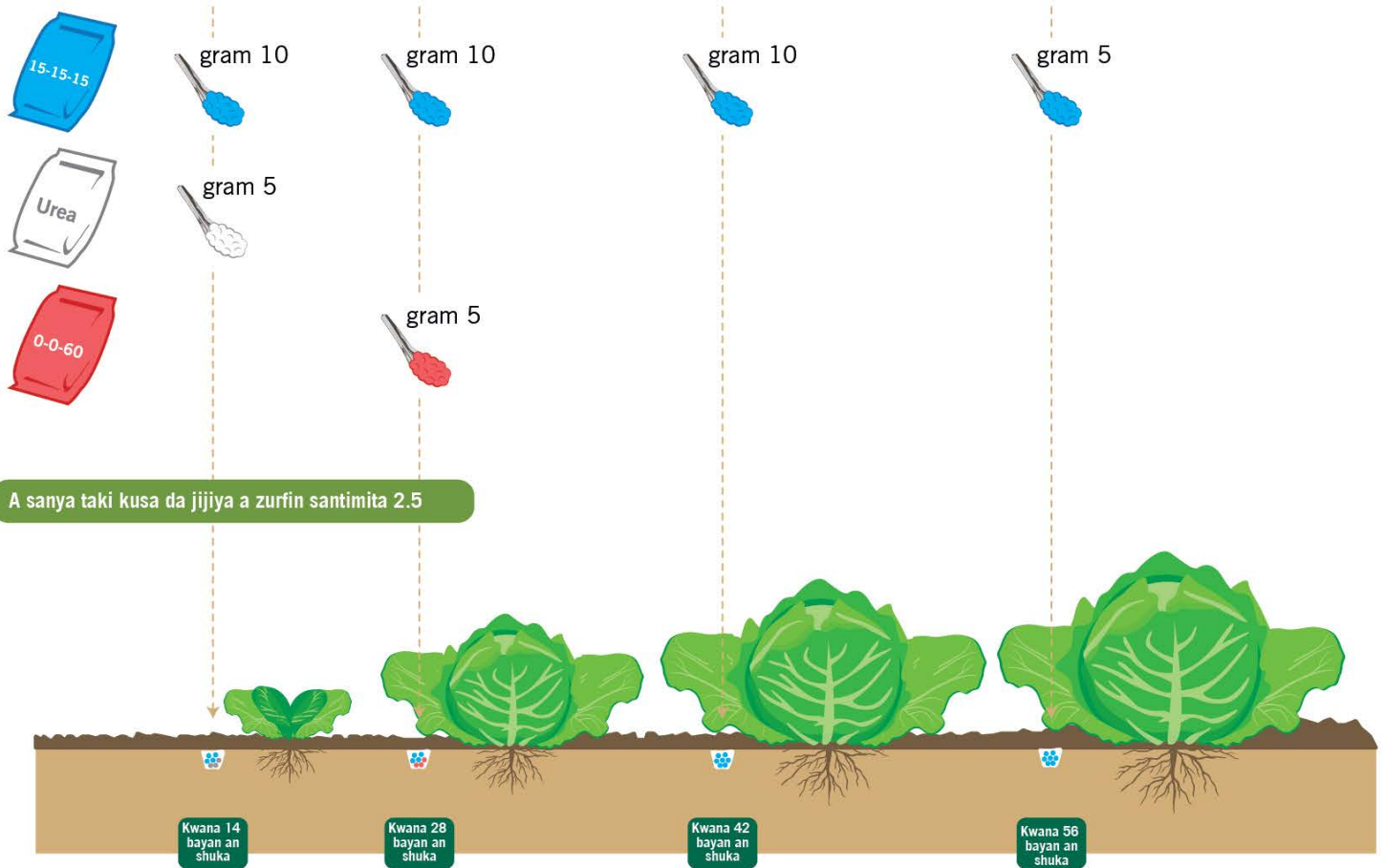
◆ Samar da danshi kowanna lokaci



◆ A rage yawan ban ruwa, kuma a sanya shi rana kwanaki 5-7 kafin ayi dashe da la'asar



# • Sanya taki



Yawan takin da akace asa anyi duba da sinadarin da shuka ke bukata da kuma tushen amfani 26,600 a kowacca hecta. zaka daidaita adadin duba ga lokacin noman, Yanayin kasa da yanayin girman shuka

# • Hada hanyoyi da yawa domin magance kwari



- » Yin amfani da tarko mai gam domin gano/ kame kwari.
- » Ayi amfani da tarkon mai tsaki no na wuta domin tsutsa



Domin hana yaduwar cututtuka a cire dukkan shukar da ta kamu da ciwo, gyauro da ciyawa, kuma a zubar/Binne.



Chanjin amfanin gona na hana karuwar kwari da cututtuka. Yana kuma inganta kasar noma.

• Hada hanyoyi daban-daban don magance kwari da amfani da magungunan kashe kwari yadda yakamata

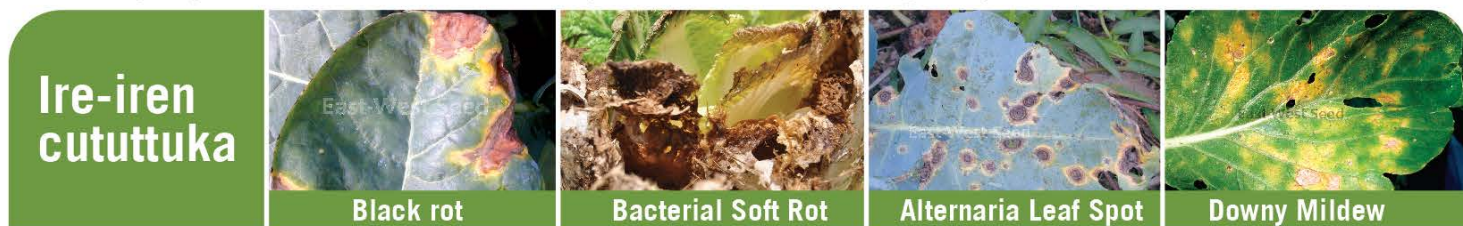
» Arika can canza Nau'in magani don kada Kwaro ya daurewa Maganin.

» koda yausha a karanta rubutun jikin robar maganin kwari, don ganin amfaninsa



Sinadarin da maganin ya kunsu	yadda magani yake aiki	Aikin	Farin Kwaro	Afid (Darba)	Tsutsan	Diamondback Moth
Lambda-cyhalothrin	3A	SC	✓	✓	✓	✓
Dinotefuran	4A	S	✓	✓		
Spinosad	5	S			✓	✓
Spinetoram	5	SC			✓	✓
Abamectin	6	SC (Kasa da S)			✓	✓
Thiocyclam oxalate	14	SC	✓	✓		
Chlorantraniliprole	28	S			✓	✓
Flubendiamide	28	S			✓	✓
<i>Bacillus thuringiensis</i>	11A	C			✓	✓
<i>Azadirachtin (neem extract)</i>	UN	Babu masaniya	✓	✓	✓	✓

Yadda maganin yake aiki a fadin (IRAC); SC (Mai illa idan yaci + Ya taba kwari); S (Mai shiga cikin jiki)



Sinadarin da maganin ya kunsu	yadda magani yake aiki	Aikin	karin bayani	Black rot	Bacterial Soft Rot	Alternaria Leaf Spot	Downy Mildew
Copper-based Fungicides	M 01	K	Donnin cutar Baktiriya: Ayi amfani dashi in yazama dole; Kada asa yawuce kaida domin a guji dauriyar magani	✓	✓	✓	✓
Chlorothalonil	M 05	K	kada a fesa sama da sau hufu (4) a tsawon kwanakin samar da shuka	No effective curative spray		✓	✓
Mancozeb	M 03	K		Manage with preventive measures like raising bed, crop rotation and sanitation		✓	✓
Azoxystrobin	11	K + C		Avoid overhead irrigation		✓	✓
Propamocarb	28	K + C	Ahada magun gunan kariya (Chlorothalonil or Mancozeb) a tanki daya				✓
Cymoxanil	27	C					✓
Metalaxyl	4	K + C	kwaro nada saurin daurewa maganin (Ayi amfani dashi sau biyu a kawai a tsawon rayuwar shuka)				✓
<i>Bacillus subtilis</i>	BM02	K		✓	✓		✓

Yadda maganin yake aiki a fadin (FRAC); K= domin kariya (yana aikin ne idan alamar cuta bata bayyana ba), C = domin Magancewa

- Ayi amfani da cikakkun kayan kare lafiyan jiki.
- Yanayi mai kyau.
- Allurar fidda magani mai kyau
- Awanke jiki da kayan aiki bayan angama feshi.

<https://growhow.eastwestseed.com>

Mallakar Gidauniyar East West Seeds ©2021.

Magungunan da aka ce ayi amfani da su ansamar dasu tare da hadin gwiwar Wageningen University & Research