



# Crop Guide

## WAXY CORN

### • Land Preparation

- » Narrow paths help with irrigation and drainage
- » 45,400 plants/hectare (adjust according to the variety and season)



ENGLISH

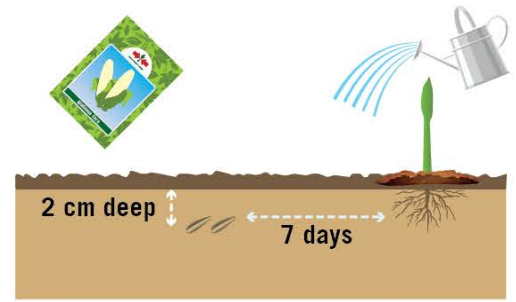




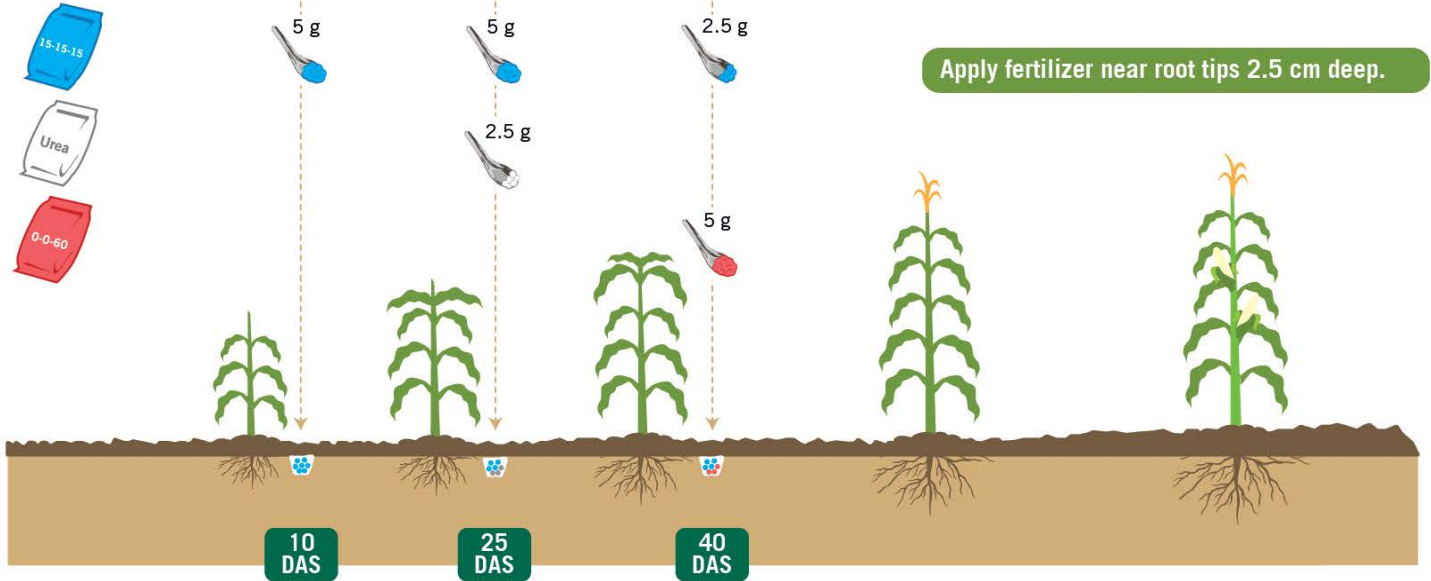
## • Sowing



- » Plant 1-2 seeds per space (thin to one plant when 4" tall) for better quality cobs
- » If one seed per space, prepare a tray of seedlings to top of empty spaces



## • Fertilizer Application



Recommended amount based on crop optimum nutrient requirement and plant population of 45,400 per hectare. Adjust application according to season, soil conditions and plant growth status.

## • Integrated Pest Management



- » Use sticky traps to monitor and mass trap insect pests



To prevent infection from spreading, sick plants, old crops and weeds must be removed and destroyed.



Crop rotation prevents build up of insect pests and diseases and restores soil fertility.

# • Integrated Pest Management and Safe Use of Pesticides

- » Alternate MoA groups to prevent resistance
- » Always read pesticide label and intended use (registered crop and pest)

## Kinds of Insects



Aphid



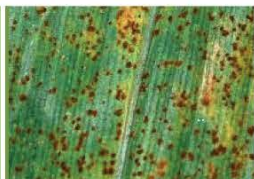
Caterpillar



Active Ingredient	MoA	Action	Aphid	Caterpillar
Lambda-cyhalothrin	3A	SC	✓	✓
Dinotefuran	4A	S	✓	
Spinosad	5	S		✓
Spinetoram	5	SC		✓
Abamectin	6	SC (slight S)		✓
Thiocyclam oxalate	14	SC	✓	
Chlorantraniliprole	28	S		✓
Flubendiamide	28	S		✓
<i>Bacillus thuringiensis</i>	11A	C		✓
<i>Azadirachtin (neem extract)</i>	UN	unknown		✓

Mode of Action (MoA) based from IRAC; SC (Stomach + Contact); S (Systemic)

## Kinds of Diseases



Rust



Corn Leaf Blight



Downy Mildew

Active Ingredient	MoA	Action	Remarks	Rust	Corn Leaf Blight	Downy Mildew
Copper-based Fungicides	M 01	P		✓	✓	✓
Chlorothalonil	M 05	P		✓	✓	✓
Mancozeb	M 03	P		✓	✓	✓
Azoxystrobin	11	P + C	Maximum 4 times per crop cycle	✓	✓	✓
Propamocarb	28	P + C			✓	✓
Cymoxanil	27	C	Tank mixed with preventive (Chlorothalonil or Mancozeb)			✓
Metalaxyl	4	P + C	High risk of resistance (only use 2 times per season)			✓
<i>Bacillus subtilis</i>	BM02	P			✓	✓

Mode of Action (MoA) based from FRAC; P = preventive (only effective when disease symptoms have not appeared yet), C = curative



Wear protective gear



Good weather



Good nozzle



Wash after spraying



# KNOWLEDGE TRANSFER

<https://growhow.eastwestseed.com>

Copyright ©2021 by East-West Seed Foundation. All rights reserved.

Agrochemical recommendations have been developed in cooperation with Wageningen University & Research