



Crop Guide **MUNG BEAN**

• Land Preparation

- » Apply 1 kg urea, 2.5 kg TSP and 2.5 kg Potash per 0.1 acre; incorporate into soil before sowing
- » 200,000 - 350,000 plants/ha (for dryland) 400,000 plants/ha (for irrigated land)



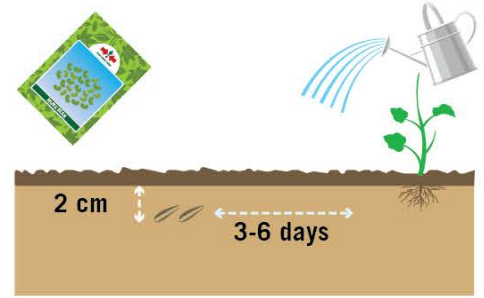
ENGLISH



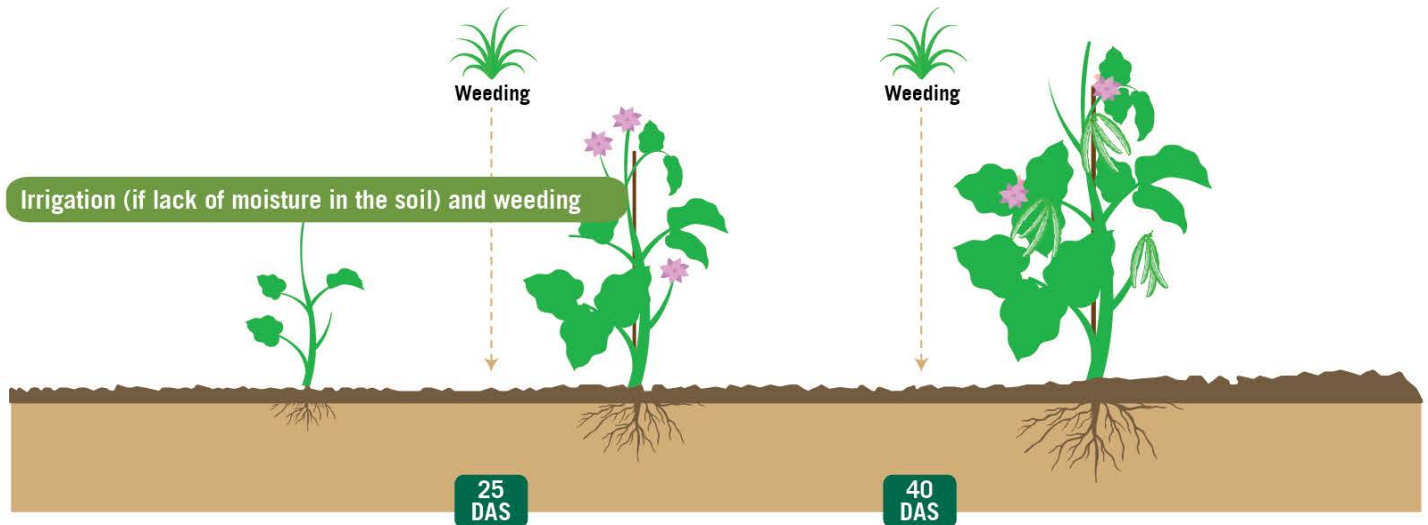
• Sowing



- » Sow 1 seed per hole every 10 cm
- » Re-sow during 15 days, if necessary
- » Mix 1 kg of seeds with 40 g *Rhizobium* before sowing (0.1 acre) to increase nodule formation



• Weeding



• Integrated Pest Management



- » Use sticky traps to monitor and mass trap insect pests



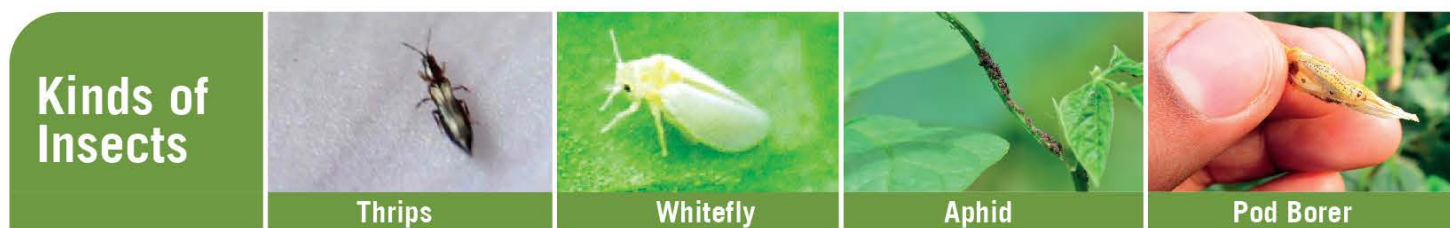
To prevent infection from spreading, sick plants, old crops and weeds must be removed and destroyed.



Crop rotation prevents build up of insect pests and diseases and restores soil fertility.

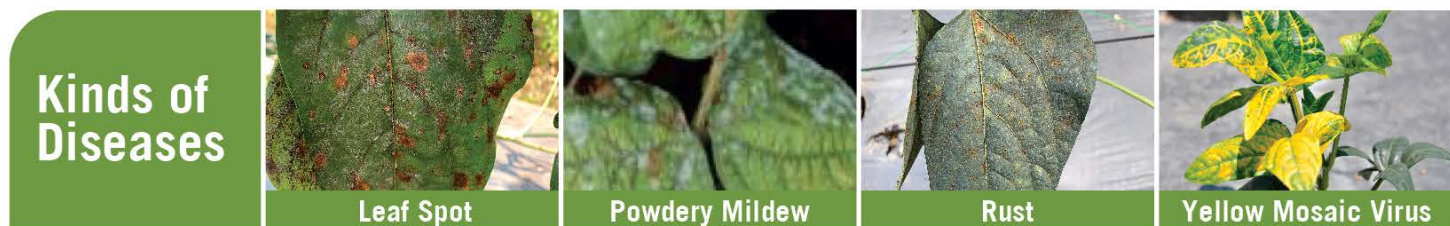
• Integrated Pest Management and Safe Use of Pesticides

- » Alternate MoA groups to prevent resistance
- » Always read pesticide label and intended use (registered crop and pest)



Active Ingredient	MoA	Action	Thrips	Whitefly	Aphid	Pod Borer
Lambda-cyhalothrin	3A	SC	✓	✓	✓	✓
Dinotefuran	4A	S	✓	✓	✓	
Spinosad	5	S				✓
Spinetoram	5	SC				✓
Abamectin	6	SC (slight S)	✓			✓
Thiocyclam oxalate	14	SC	✓	✓	✓	
Chlorantraniliprole	28	S				✓
Flubendiamide	28	S				✓
<i>Bacillus thuringiensis</i>	11A	C				✓
<i>Azadirachtin (neem extract)</i>	UN	unknown	✓	✓	✓	✓

Mode of Action (MoA) based from IRAC; SC (Stomach + Contact); S (Systemic)



Active Ingredient	MoA	Action	Remarks	Leaf Spot	Powdery Mildew	Rust	Yellow Mosaic Virus
Copper-based Fungicides	M 01	P		✓	✓	✓	Use resistant varieties or disease-free seeds Manage whitefly
Chlorothalonil	M 05	P		✓	✓	✓	
Mancozeb	M 03	P		✓	✓	✓	
Azoxystrobin	11	P + C	Maximum 4 times per crop cycle	✓	✓	✓	
Propamocarb	28	P + C					
Cymoxanil	27	C	Tank mixed with preventive (Chlorothalonil or Mancozeb) High risk of resistance				
Metalaxyl	4	P + C	High risk of resistance (only use 2 times per season)				
<i>Bacillus subtilis</i>	BM02t	P		✓	✓		

Mode of Action (MoA) based from FRAC; P = preventive (only effective when disease symptoms have not appeared yet), C = curative

- 1** Wear protective gear
- 2** Good weather
- 3** Good nozzle
- 4** Wash after spraying



KNOWLEDGE TRANSFER

<https://growhow.eastwestseed.com>

Copyright ©2021 by East-West Seed Foundation. All rights reserved.

Agrochemical recommendations have been developed in cooperation with Wageningen University & Research