



# Crop Guide CARROT



ENGLISH

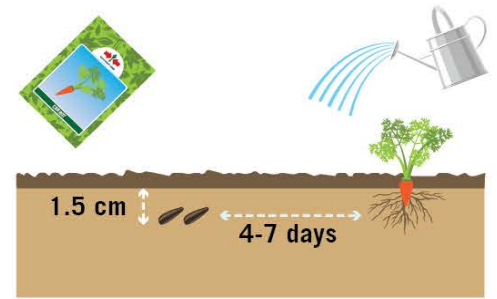
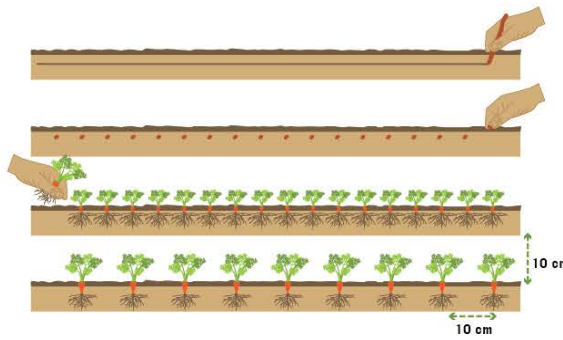
## • Land Preparation

- » Narrow paths help with irrigation and drainage
- » Organic mulch may be installed to conserve soil moisture especially during dry season and minimize weed growth
- » Select area with loose and well-drained soil
- » 600,000 plants per hectare (adjust according to variety and season)

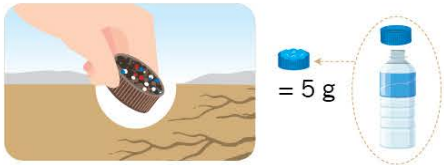


## • Sowing

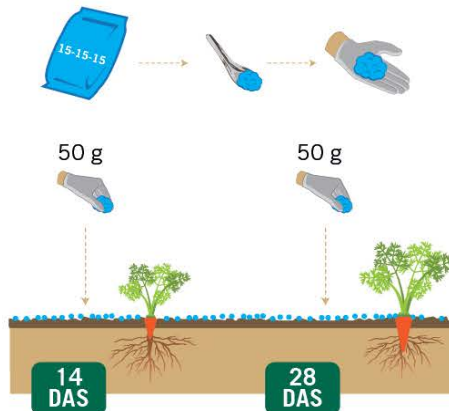
- » Make rows and planting distance (using stick)
- » Sow seeds thinly, cover with soil and keep it moist
- » Do thinning when needed (10-15 DAS)



## • Fertilizer Application



Use recycled spoon (do not use for eating) or bottled water cap to measure application



- » Broadcast fertilizer on 2 m length bed
- » Remove the weeds before fertilizer application

Recommended amount based on crop optimum nutrient requirement and plant population of 600,000 per hectare. Adjust application according to season, soil conditions and plant growth status.

## • Integrated Pest Management



- » Use sticky traps to monitor and mass trap insect pests



To prevent infection from spreading, sick plants, old crops and weeds must be removed and destroyed.

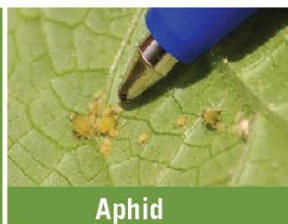


Crop rotation prevents build up of insect pests and diseases and restores soil fertility.

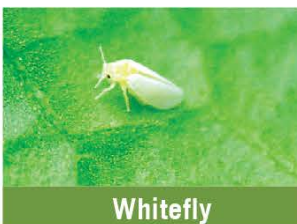
# • Integrated Pest Management and Responsible Use of Pesticides

- » Alternate MoA groups to prevent resistance
- » Avoid the use of pesticides. If necessary, reduce spraying one week before harvest.
- » Always read pesticide label and intended use (registered crop and pest)

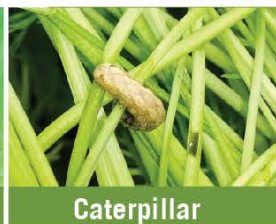
## Kinds of Insects



Aphid



Whitefly

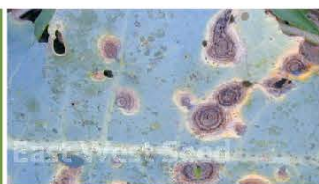


Caterpillar

Active Ingredient	MoA	Action	Aphid	Whitefly	Caterpillar
Lambda-cyhalothrin	3A	SC	✓	✓	✓
Dinotefuran	4A	S	✓	✓	
Spinosad	5	S			✓
Spinetoram	5	SC			✓
Abamectin	6	SC (slight S)			✓
Thiocyclam oxalate	14	SC	✓	✓	
Chlorantraniliprole	28	S			✓
Flubendiamide	28	S			✓
<i>Bacillus thuringiensis</i>	11A	C			✓
Azadirachtin (neem extract)	UN	unknown	✓	✓	✓

Mode of Action (MoA) based from IRAC; SC (Stomach + Contact); S (Systemic)

## Kinds of Diseases



Alternaria Leaf Spot



Powdery Mildew



Bacterial Soft Rot

Active Ingredient	MoA	Action	Remarks	Alternaria Leaf Spot	Powdery Mildew	Bacterial Soft Rot
Copper-based Fungicides	M 01	P	For bacterial diseases: Use only when necessary; do not overuse to avoid potential resistance build up	✓	✓	✓
Chlorothalonil	M 05	P		✓	✓	No effective curative spray Manage with preventive measures like raising bed, crop rotation and sanitation Avoid overhead irrigation.
Mancozeb	M 03	P		✓	✓	
Azoxystrobin	11	P + C	Maximum 4 times per crop cycle	✓	✓	
<i>Bacillus subtilis</i>	BM02	P			✓	✓

Mode of Action (MoA) based from FRAC; P = preventive (only effective when disease symptoms have not appeared yet), C = curative



1 Wear protective gear



2 Good weather

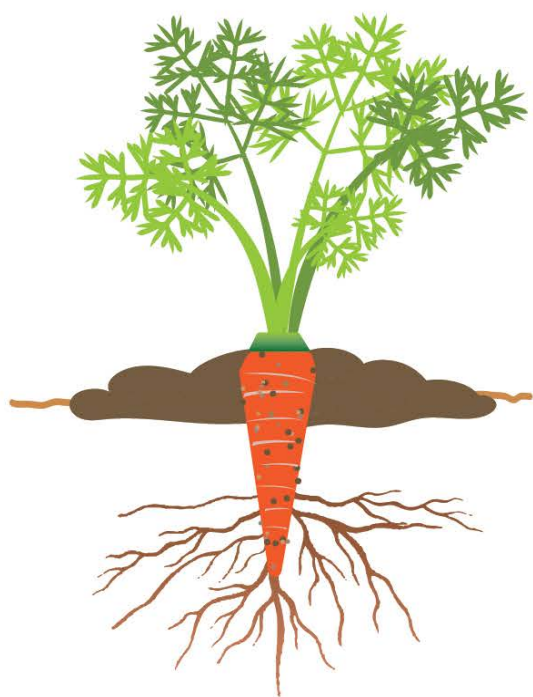


3 Good nozzle



4 Wash after spraying

# • Harvesting and Postharvest Practice



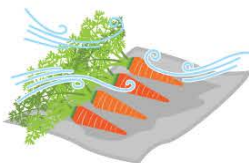
**Make sure the soil is dry for easy harvesting.**



**Ready to harvest (DAS) :  
70 - 75 DAS depending on the variety**



**Wash with water to remove the soil.**



**Air dry under shade and clean area.  
Avoid direct contact with the soil.**



**Remove damaged harvest (from diseases,  
insects) and prune yellow leaves.  
Sort according to market preferences  
(e.g. size)**



**Place the fruit in a padded container.**