



Crop Guide

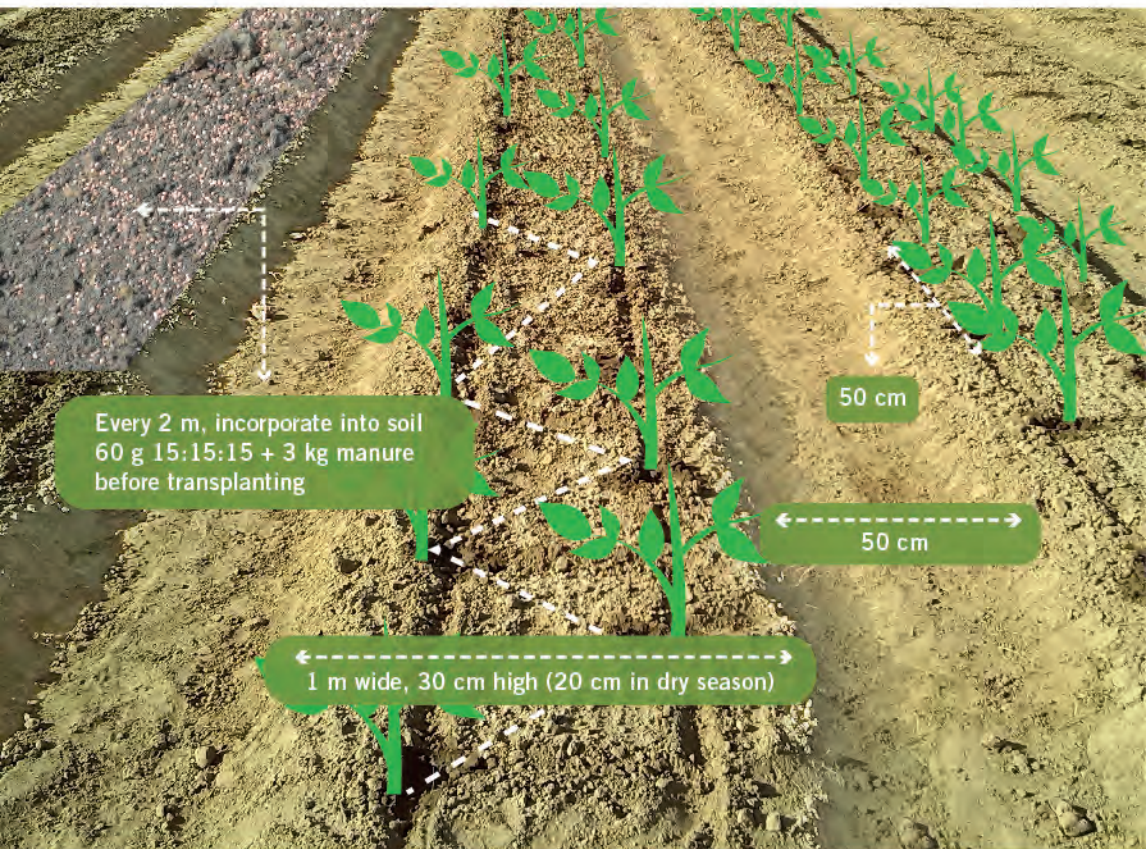
HOT PEPPER

• Land Preparation

- » Narrow paths help with irrigation and drainage
- » Organic or plastic mulch may be installed to conserve soil moisture and minimize weed growth
- » Install trellis 8-10 days after transplanting
- » 26,600 plants/ha (adjust according to the variety and season)



ENGLISH

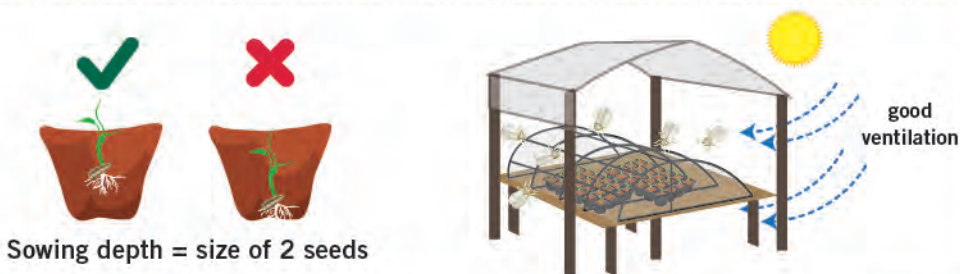


• Seedling Production

- ◆ Substrate preparation: Heat for 10 minutes or place in full sun for half a day, then fill tray



- ◆ Sow seeds and protect seedlings



- ◆ Maintain constant moisture



- ◆ Reduce water and expose to more sun 5-7 days before transplanting late in the afternoon



Integrated Pest Management and Safe Use of Pesticides

- » Alternate MoA groups to prevent resistance
- » Avoid the use of pesticides for leafy vegetables. If necessary, reduce spraying one week before harvest
- » Always read pesticide label and intended use (registered crop and pest)

Kinds of Insects



Caterpillar

Flea Beetle

Leafminer

Active Ingredient	MoA	Action	Caterpillar	Flea Beetle	Leafminer
Lambda-cyhalothrin	3A	SC	✓	✓	✓
Dinotefuran	4A	S	✓	✓	✓
Spinosad	5	S	✓	✓	✓
Spinetoram	5	SC	✓	✓	✓
Abamectin	6	SC (slight S)	✓	✓	✓
Thiocyclam oxalate	14	SC	✓	✓	✓
Chlorantraniliprole	28	S	✓	✓	✓
Flubendiamide	28	S	✓	✓	✓
<i>Bacillus thuringiensis</i>	11A	C	✓	✓	✓
<i>Azadirachtin (neem extract)</i>	UN	unknown	✓	✓	✓

Mode of Action (MoA) based from IRAC; SC (Stomach + Contact); S (Systemic)

Kinds of Diseases



White Rust

Active Ingredient	MoA	Action	Remarks	White Rust
Copper-based Fungicides	M 01	P		✓
Chlorothalonil	M 05	P		✓
Mancozeb	M 03	P		✓
Azoxystrobin	11	P + C	Maximum 4 times per crop cycle	✓

Mode of Action (MoA) based from FRAC; P = preventive (only effective when disease symptoms have not appeared yet), C = curative



Wear protective gear



Good weather



Good nozzle



Wash after spraying



KNOWLEDGE TRANSFER

<http://guides.eastwestseed.com>

Copyright ©2021 by East-West Seed Foundation. All rights reserved.

Agrochemical recommendations have been developed in cooperation with Wageningen University & Research